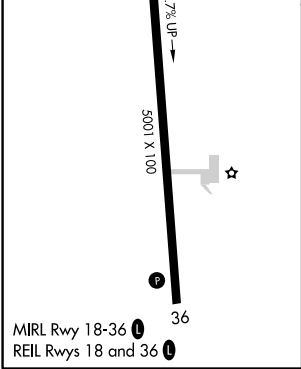
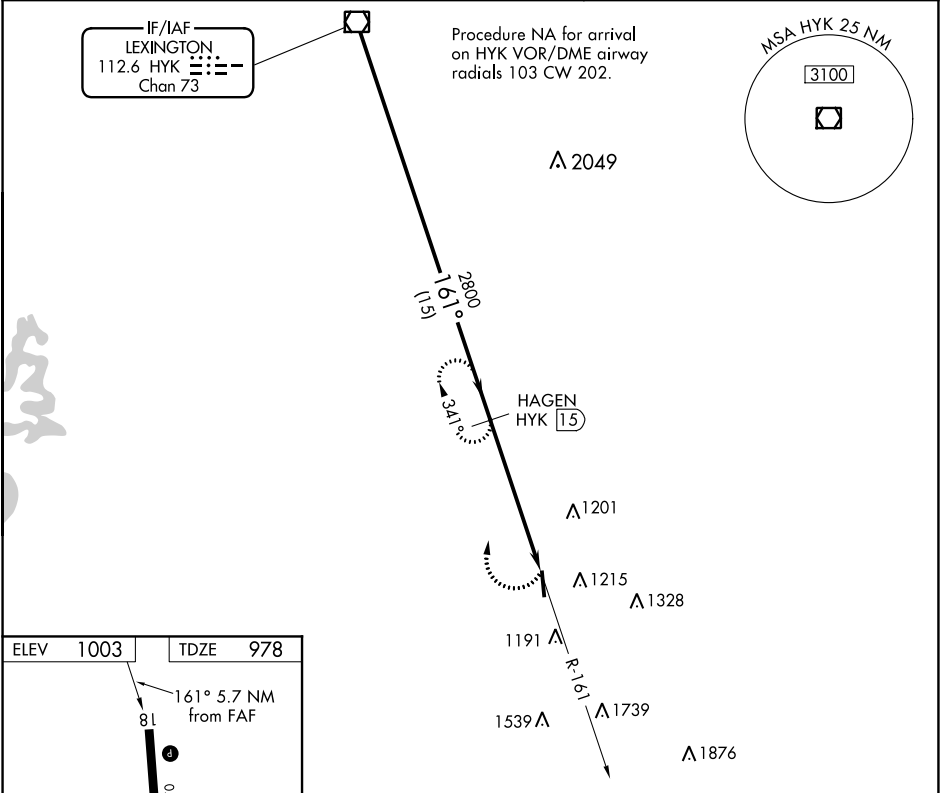


VOR/DME HYK	APP CRS	Rwy Idg	5001
112.6	161°	TDZE	978
Chan 73		Apt Elev	1003

VOR RWY 18
CENTRAL KENTUCKY RGNL (RGA)

DME required.	When local altimeter setting not received, use Lexington altimeter setting and increase all MDA 80 feet; increase S-18 Cats C and D visibility ¼ SM; Circling Cat C ½ SM and Circling Cat D ¼ SM.	MISSED APPROACH: Climbing right turn to 2800 on HYK VOR/DME R-161 to HAGEN/15 DME and hold.
---------------	---	---

AWOS-3 119.625	LEXINGTON APP CON 120.15 259.3	UNICOM 122.725 (CTAF) 0
-------------------	-----------------------------------	----------------------------



HYK VOR/DME		HAGEN HYK 15		2800	HAGEN HYK 15
2800		2800		2.95°	HYK 20.7
15 NM		5.7 NM		TCH 40	
CATEGORY	A	B	C	D	
S-18	1460-1	482 (500-1)	1460-1 3/8	482 (500-1 3/8)	
CIRCLING	1460-1 457 (500-1)	1520-1 517 (600-1)	1520-1 1/2 517 (600-1 1/2)	1780-2 1/2 777 (800-2 1/2)	

SE-1, 31 DEC 2020 to 28 JAN 2021

SE-1, 31 DEC 2020 to 28 JAN 2021