

WAAS CH 86826 W05A	APP CRS 052°	Rwy Idg TDZE Apt Elev	6202 577 577
--	------------------------	-----------------------------	---

RNAV (GPS) RWY 5

KYLE-OAKLEY FIELD (CEY)

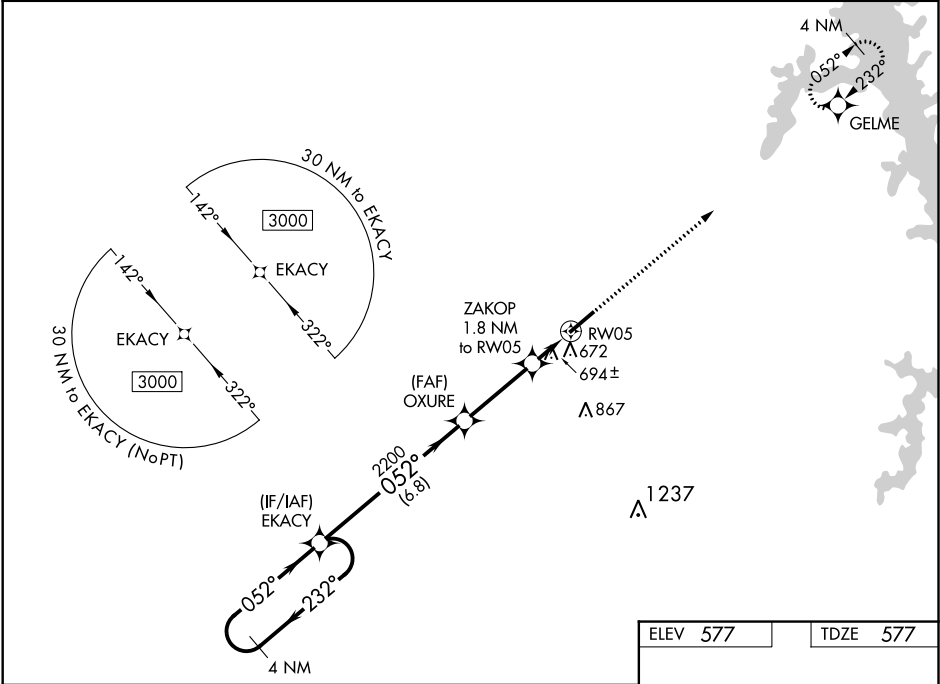
▼

▲

When local altimeter setting not received use Mayfield altimeter setting: increase all DA/MDA 40 feet, and increase LPV, LNAV/VNAV all Cats, and LNAV Cats C and D visibility 1/8 mile. For uncompensated Baro-VNAV systems, LNAV/VNAV NA below -16°C (4°F) or above 54°C (130°F). DME/DME RNP-0.3 NA. Helicopter visibility reduction below 3/4 SM NA. VDP and Baro-VNAV NA when using Mayfield altimeter setting.

MISSED APPROACH: Climb to 3000 direct GELME and hold.

AWOS-3 119.975	MEMPHIS CENTER 133.65 292.15	UNICOM 122.7 (CTAF) 0
--------------------------	--	---------------------------------



4 NM Holding Pattern		VGSI and RNAV glidepath not coincident (VGSI Angle 3.00/TCH 29).		3000	GELME
GP 3.00° TCH 40		*LNAV only			
EKA		OXURE		ZAKOP	
3000		2200		1.8 NM to RWY 05	
052°		*1180		*1.1 NM to RWY 05	
2200		RWY 05		1.1 NM	
6.8 NM		3.2 NM		0.7 NM	
CATEGORY	A	B	C	D	
LPV DA	827-7/8		250 (300-7/8)		
LNAV/VNAV DA	871-1		294 (300-1)		
LNAV MDA	960-1	383 (400-1)	960-1 1/8	383 (400-1 1/8)	
CIRCLING	1000-1 423 (500-1)	1040-1 463 (500-1)	1040-1 1/2 463 (500-1 1/2)	1180-2 603 (700-2)	

