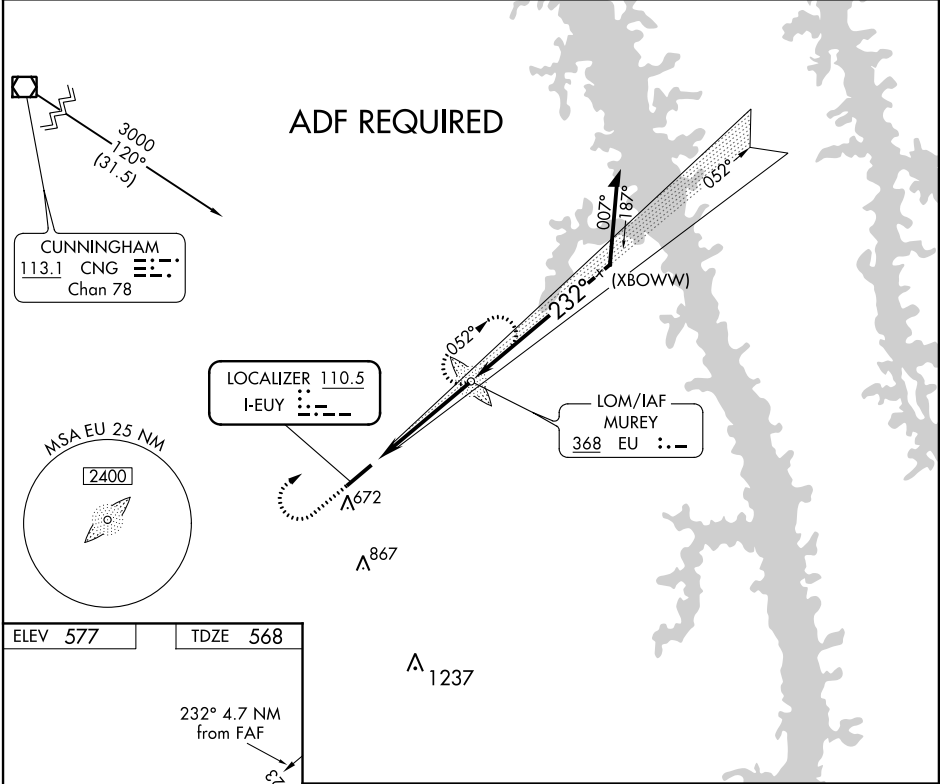


LOC I-EUY 110.5	APP CRS 232°	Rwy Idg TDZE Apt Elev	6202 568 577
---------------------------	------------------------	-----------------------------	---

LOC RWY 23
KYLE-OAKLEY FIELD (CEY)

⚠ NA Rwy 23 helicopter visibility reduction below ¾ SM NA. ADF required. When local alimeter setting not recieved use Mayfield alimeter setting: increase all MDA 40 feet and increase S-23 Cats C and D visibility ½ mile. For inop ODALS, increase S-23 Cats C and D visibility ¼ mile.	ODALS 	MISSED APPROACH: Climb to 1200 then climbing right turn to 2100 direct MUREY LOM and hold.
---	------------------	---

AWOS-3 119.975	MEMPHIS CENTER 133.65 292.15	UNICOM 122.7 (CTAF) 0
---------------------------------	---	--



ELEV 577	TDZE 568
REIL Rws 5 and 23 MIRL Rwy 5-23	
FAF to MAP 4.7 NM	
Knots	60 90 120 150 180
Min:Sec	4:42 3:08 2:21 1:53 1:34

1200	2100	EU		
VGSi and descent angles not coincident (VGSi Angle 3.50/TCH 38).				
CATEGORY	A	B	C	D
S-23	980-¾	412 (500-¾)	980-1	412 (500-1)
CIRCLING	1000-1 423 (500-1)	1040-1 463 (500-1)	1040-1½ 463 (500-1½)	1180-2 603 (700-2)

SE-1, 31 DEC 2020 to 28 JAN 2021

SE-1, 31 DEC 2020 to 28 JAN 2021