

WAAS CH 81933 W03A	APP CRS 033°	Rwy Idg 5000 TDZE 1019 Apt Elev 1019
--	------------------------	---

RNAV (GPS) RWY 3

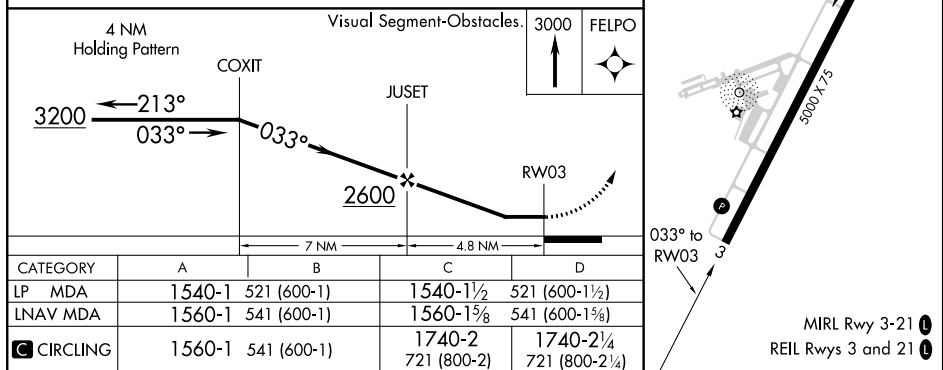
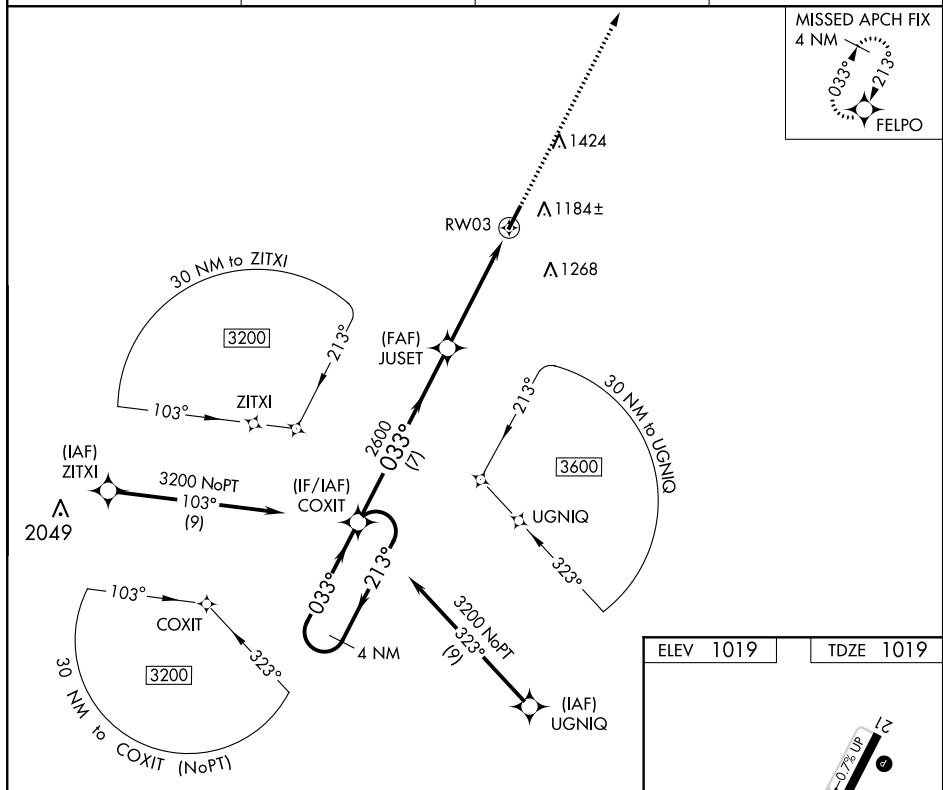
MOUNT STERLING-MONTGOMERY COUNTY (IOB)

TANA

DME/DME RNP-0.3 NA. When local altimeter setting not received, use Lexington altimeter setting and increase all MDA 80 feet and all visibilities $\frac{1}{4}$ mile. Helicopter visibility reduction below $\frac{3}{4}$ SM NA.

MISSED APPROACH:
Climb to 3000 direct
FELPO and hold.

AWOS-3 120.675	LEXINGTON APP CON 120.15 259.3	GCO 121.72	UNICOM 122.8 (CTAF) 0
--------------------------	--	----------------------	---------------------------------



CATEGORY	A	B	C	D
LP MDA	1540-1	521 (600-1)	1540-1½	521 (600-1½)
LNAV MDA	1560-1	541 (600-1)	1560-1⅞	541 (600-1⅞)
C CIRCLING	1560-1	541 (600-1)	1740-2 721 (800-2)	1740-2¼ 721 (800-2¼)

MOUNT STERLING, KENTUCKY
 Orig-C 12OCT17

MOUNT STERLING-MONTGOMERY COUNTY (IOB)
38°03'N-83°59'W PNAV (GPS) PWAY 3

RNAV (GPS) RWY 3

SE-1, 31 DEC 2020 to 28 JAN 2021

SE-1, 31 DEC 2020 to 28 JAN 2021