

NDB IOB

210

APP CRS

217°

Rwy Idg

5000

TDZE

1007

Apt Elev

1019

MOUNT STERLING-MONTGOMERY COUNTY (IOB)

NDB RWY 21

▼

▲ NA

When local altimeter setting not received, use Lexington altimeter setting and increase all MDA 80 feet and increase all visibilities ¼ mile.
Helicopter visibility reduction below ¾ SM NA.

MISSED APPROACH: Climb to 2900 in IOB NDB holding pattern.

AWOS-3

120.675

LEXINGTON APP CON

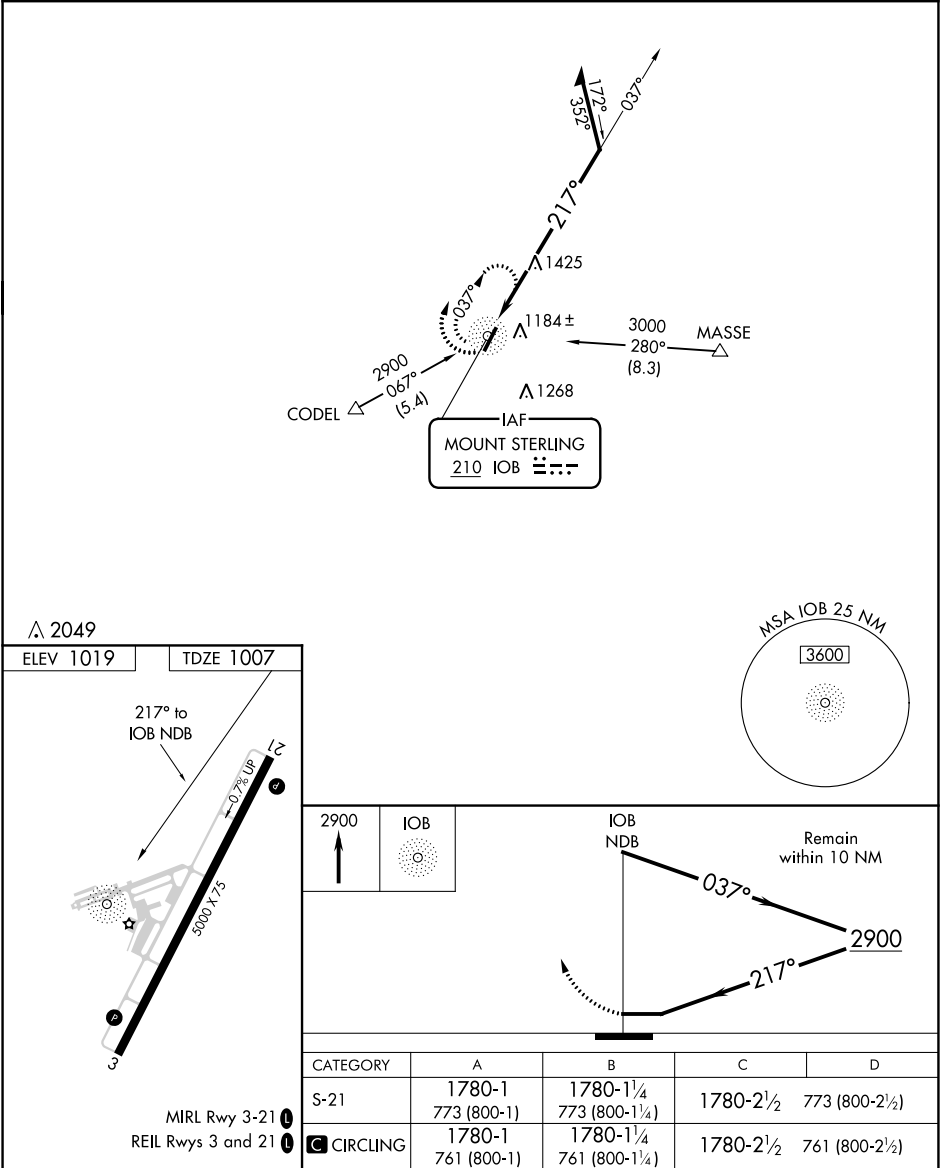
120.15 259.3

GCO

121.72

UNICOM

122.8 (CTAF) 0



SE-1, 31 DEC 2020 to 28 JAN 2021

SE-1, 31 DEC 2020 to 28 JAN 2021