

WAAS CH 65717 W20A	APP CRS 195°	Rwy Idg 5900 TDZE 984 Apt Elev 984
--	------------------------	---

RNAV (GPS) RWY 20
FAYETTEVILLE MUNI (FYM)

FAYETTEVILLE MUNI (FYM)

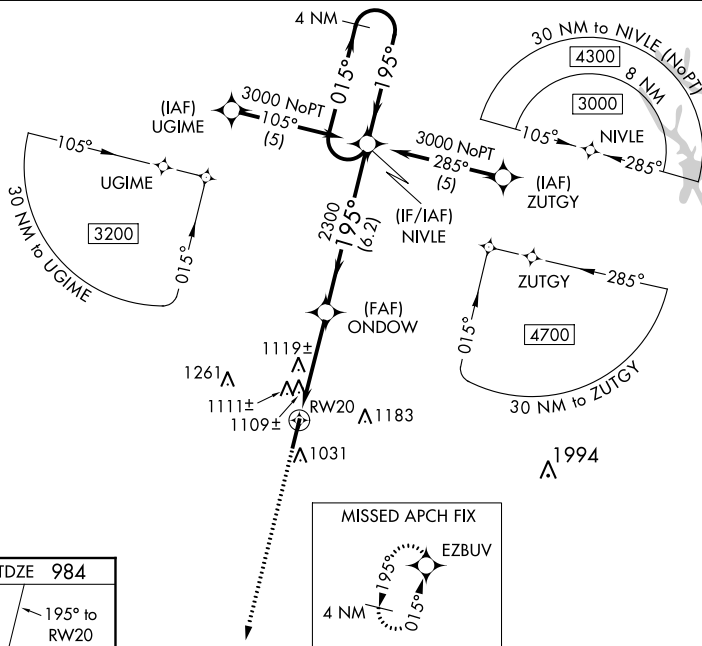
▼
▲ NA For uncompensated Baro-VNAV systems, LNAV/VNAV NA below -16°C (4°F) or above 46°C (114°F). DME/DME RNP-0.3 NA. Visibility reduction by helicopters NA. When local altimeter setting not received use Huntsville altimeter setting and increase all DA 113 feet and all MDA 120 feet; increase LPV all Cats and LNAV Cat C and D visibility ½ mile, LNAV/VNAV all Cats and Circling Cat D visibility ¼ mile. Baro-VNAV and VDP NA when using Huntsville altimeter setting. Inoperative table does not apply to LNAV/VNAV all Cats. Inoperative table does not apply to LNAV Cat C when using Huntsville altimeter setting.

ODALS



MISSED APPROACH:
Climb to 3000 direct
EZBUY and hold.

AWOS-3 135.275	HUNTSVILLE APP CON ★ 125.6 354.1	CLNC DEL (GCO) 121.725	UNICOM 122.8 (CTAF) ①
--------------------------	--	----------------------------------	---------------------------------



ELEV 984

TDZE 984

195° to RW20

5900 X 100

0.4% Up

MIRA Rwy 2-20

REIL Rwy 2 and 20

3000

EZBUV

VGS1 and RNAV glidepath not coincident
(VGS1 Angle 3.00/TCH 20).

4 NM Holding Pattern

NIVLE

ONDOWN

2300

195°

015°

3000

GP 3.00° TCH 40

1.2 NM

2.8 NM

6.2 NM

1.2 NM

RW20

*LNAV only.

*1.2 NM to RW20

CATEGORY	A	B	C	D
LPV DA	1260-1	276 (300-1)		
LNAV/VNAV DA	1448-1 $\frac{3}{4}$	464 (500-1 $\frac{3}{4}$)		
LNAV MDA	1380- $\frac{3}{4}$	396 (400- $\frac{3}{4}$)	1380-1 $\frac{1}{4}$ 396 (400-1 $\frac{1}{4}$)	
CIRCLING	1420-1 436 (500-1)	1440-1 456 (500-1)	1440-1 $\frac{1}{2}$ 456 (500-1 $\frac{1}{2}$)	1540-2 556 (600-2)