

WAAS CH <b>61017</b> <b>W02A</b>	APP CRS <b>015°</b>	Rwy Idg <b>5500</b> TDZE <b>978</b> Apt Elev <b>984</b>
--	------------------------	---

RNAV (GPS) RWY 2

FAYETTEVILLE MUNI (FYM)

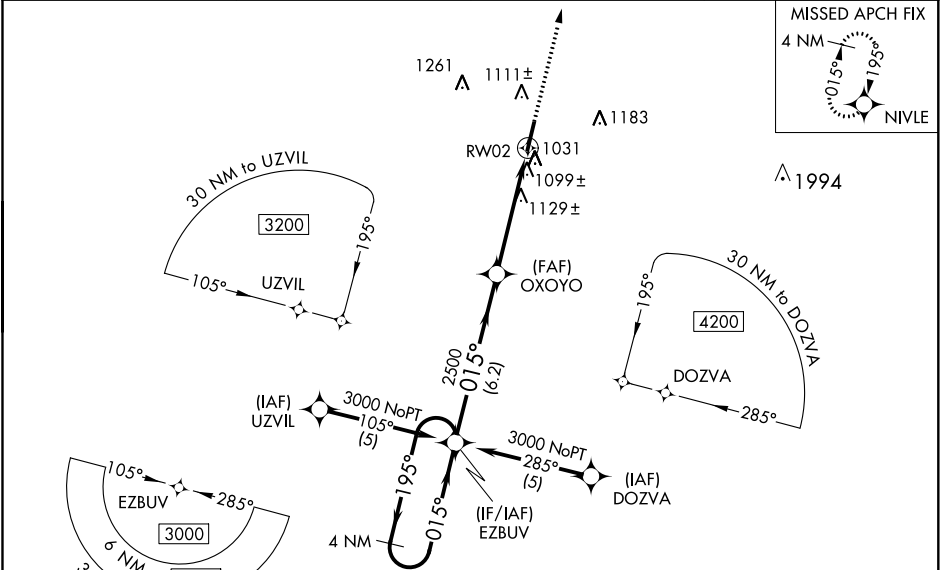
▼

▲ NA

Baro-VNAV NA when using Huntsville altimeter setting. For uncompensated Baro-VNAV systems, LNAV/VNAV NA below -16°C (4°F) or above 46°C (114°F). DME/DME RNP-0.3 NA. Visibility reduction by helicopters NA. When local altimeter setting not received use Huntsville altimeter setting and increase all DA 113 feet and all MDA 120 feet; increase LPV all Cats, LNAV Cat C and Circling Cat D visibility ¼ mile and LNAV/VNAV all Cats and LNAV Cat D visibility ½ mile. VDP NA when using Huntsville altimeter setting.

MISSED APPROACH:  
Climb to 3000 direct NIVLE and hold.

AWOS-3 <b>135.275</b>	HUNTSVILLE APP CON ★ <b>125.6 354.1</b>	CLNC DEL (GCO) <b>121.725</b>	UNICOM <b>122.8 (CTAF) 0</b>
--------------------------	--	----------------------------------	---------------------------------



ELEV <b>984</b>	TDZE <b>978</b>
MIRL Rwy 2-20 0	REIL Rwy 2 and 20 0

CATEGORY	4 NM Holding Pattern				VGSI and RNAV glidepath not coincident (VGSI 3.00/TCH 22).				3000	NIVLE
	EZBUEV				OXOYO				3000	NIVLE
	GP 3.00° TCH 40				* 1.3 NM to RW02				* LNAV only.	
	3000 ← 195° → 015° → 015°				2500				RW02	
	6.2 NM				3.4 NM				1.3 NM	
LPV DA	1228-1				250 (300-1)					
LNAV/VNAV DA	1406-1½				428 (500-1½)					
LNAV MDA	1380-1				402 (400-1)				1380-1¼ 402 (400-1¼)	
CIRCLING	1420-1 436 (500-1)				1440-1 456 (500-1)				1440-1½ 556 (600-2)	