

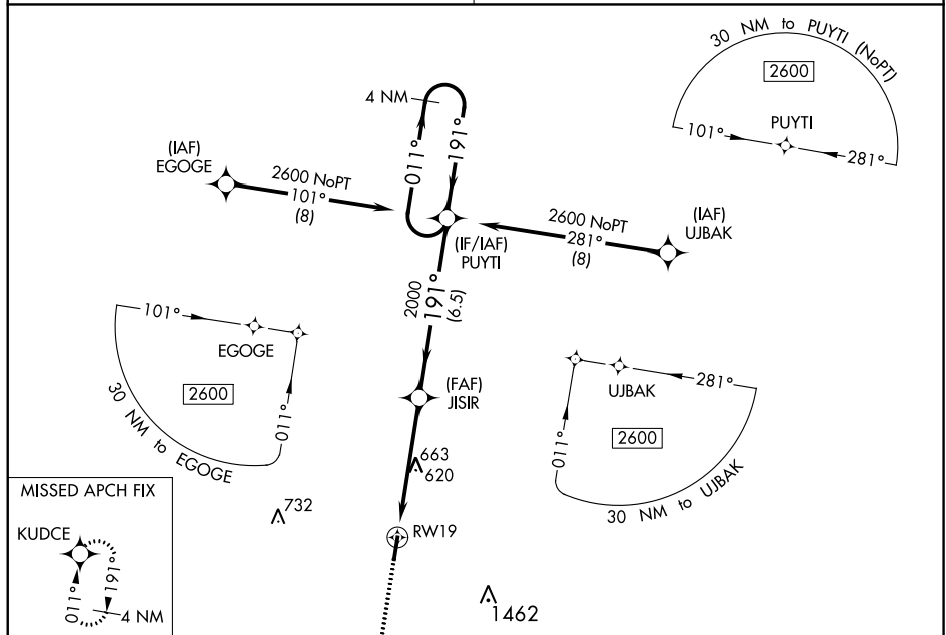
WAAS CH <b>72938</b> <b>W19A</b>	APP CRS <b>191°</b>	Rwy Idg <b>4802</b> TDZE <b>356</b> Apt Elev <b>358</b>
--	------------------------	---

RNAV (GPS) RWY 19  
GIBSON COUNTY (TGC)

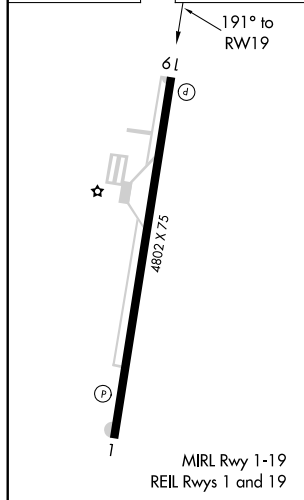
**T** Night landing: Rwy 19 NA. DME/DME RNP-0.3 NA. Helicopter visibility reduction below 1 SM NA. Obtain local altimeter setting on CTAF; when not received use  
**A** NA McKellar-Sipes Rgnl altimeter setting and increase all MDA 60 feet, increase Circling Cat C visibility ¼ mile.

**MISSED APPROACH:** Climb to 2600 direct KUDCE and hold.

MEMPHIS CENTER	UNICOM
<b>134.65 316.15</b>	<b>122.8 (CTAF)</b>



ELEV 358	TDZE 356
----------	----------



4 NM  
Holding Pattern

CATEGORY	A	B	C	D
LP MDA	920-1	564 (600-1)	920-1½	564 (600-1½)
LNAV MDA	940-1	584 (600-1)	940-1¾	584 (600-1¾)
<b>C</b> CIRCLING	980-1	622 (700-1)	980-1¾ 622 (700-1¾)	1780-3 1422 (1500-3)

RNAV (GPS) RWY 19