

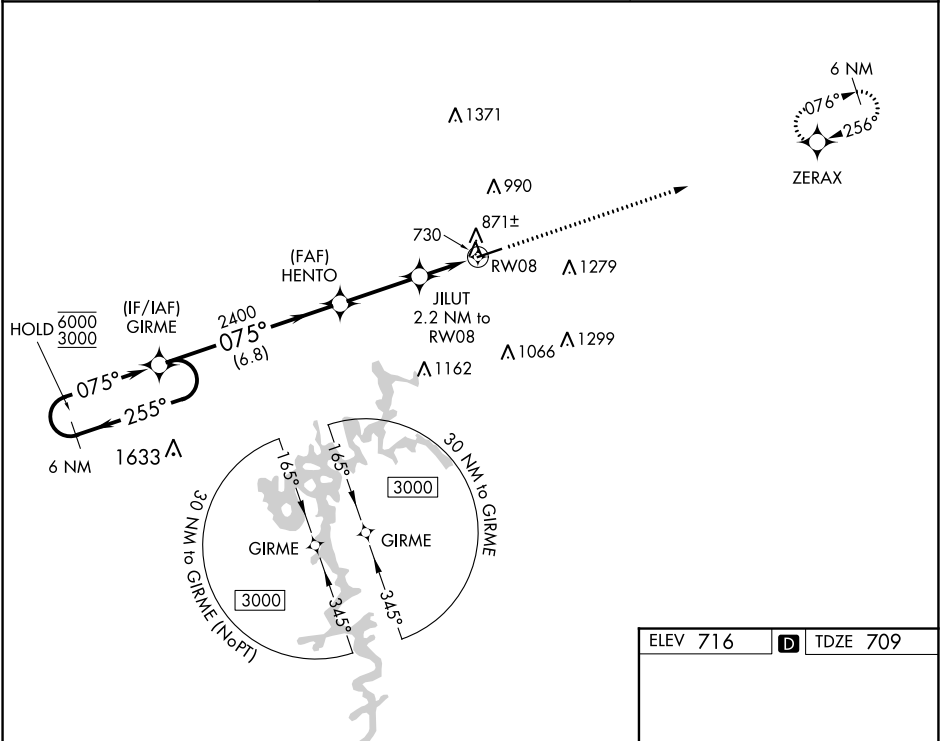
WAAS CH 77607 W08A	APP CRS 075°	Rwy Idg TDZE 709 Apt Elev 716
--	------------------------	---

RNAV (GPS) RWY 8

GLASGOW MUNI (GLW)

RNP APCH.	MISSED APPROACH: Climb to 3000 direct ZERAX and hold.
<div><div></div><div></div></div> <div>Circling to Rwy 26 NA at night. For uncompensated Baro-VNAV systems, LNAV/VNAV NA below -16°C or above 54°C.</div>	

AWOS-3 118.525	MEMPHIS CENTER 132.9 290.3	UNICOM 122.8 (CTAF) 1
--------------------------	--------------------------------------	--



6 NM Holding Pattern		VGSI and RNAV glidepath not coincident (VGSI Angle 3.00/TCH 29).		3000	ZERAX
6000 3000		GIRME		↑	
GP 3.00° TCH 40		HENTO 2400		*LNAV only	
255°		075°		075° to RW08	
6.8 NM		3 NM		0.9 NM 1.3 NM	
JILUT 2.2 NM to RW08		*1440		5302 X 100	
6.8 NM		3 NM		0.9 NM 1.3 NM	
CATEGORY	A	B	C	D	
LPV DA	971-1		262 (300-1)		
LNAV/VNAV DA	1125-1 3/8		416 (500-1 3/8)		
LNAV MDA	1140-1	431 (500-1)	1140-1 1/4	431 (500-1 1/4)	
					MIRL Rwy 8-26 1 REIL Rwy 8 and 26 1

SE-1, 31 DEC 2020 to 28 JAN 2021

SE-1, 31 DEC 2020 to 28 JAN 2021