

WAAS CH 45717 W20A	APP CRS 202°	Rwy Idg TDZE Apt Elev	6450 874 874
--	------------------------	-----------------------------	---

RNAV (GPS) RWY 20

MCMINN COUNTY (MMI)

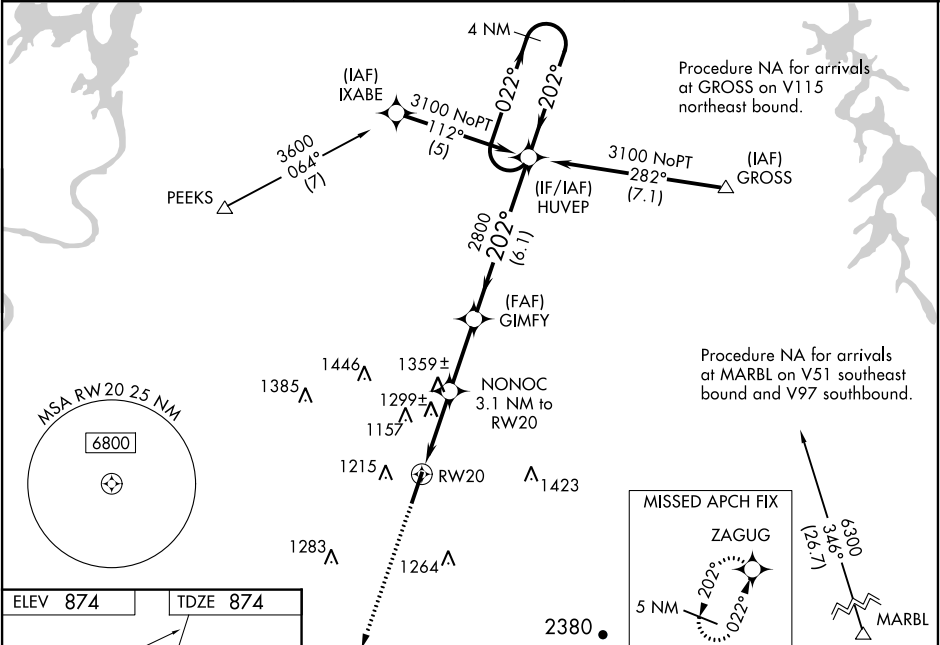
▼

NA

Baro-VNAV NA when using Mc Ghee Tyson altimeter setting. For uncompensated Baro-VNAV systems, LNAV/VNAV NA below 16°C (4°F) or above 54° (130°F). DME/DME RNP-0.3 NA. Helicopter visibility reduction below ¾ SM NA. When local altimeter setting not received, use Mc Ghee Tyson altimeter setting and increase all DA 101 feet; all MDA 120 feet; LPV all Cats visibility ½ mile; LNAV/VNAV all Cats visibility 1 mile; LNAV and Circling Cat B visibility ½ mile; LNAV and Circling Cats C/D visibility ½ mile. VDP NA when using Mc Ghee Tyson altimeter setting. Night Landing: Rwy 2 NA.

MISSED APPROACH:
Climb to 4100 direct ZAGUG and hold.

AWOS-3 125.425	KNOXVILLE APP CON 123.9 353.6	UNICOM 122.8 (CTAF)
--------------------------	---	-------------------------------



ELEV 874

TDZE 874

202° to RW20

0.8% UP

6450 x 100

REIL Rwy 2 and 20

MIRL Rwy 2-20

4100	ZAGUG	VGSI and RNAV glidepath not coincident (VGSI Angle 3.00/TCH 50).	4 NM	Holding Pattern
*LNAV only.	NONOC 3.1 NM to RW20	GIMFY 2800	HUVEP	
	*2.2 NM to RW20	*1900	2800	GP 3.00° TCH 40
	2.2	0.9	2.7 NM	6.1 NM
CATEGORY	A	B	C	D
LPV DA		1174-1	300 (300-1)	
LNAV/VNAV DA		1718-3	844 (900-1)	
LNAV MDA	1620-1 746 (800-1)	1620-1¼ 746 (800-1¼)	1620-2¼ 746 (800-2¼)	1620-2½ 746 (800-2½)
CIRCLING	1620-1 746 (800-1)	1620-1¼ 746 (800-1¼)	1620-2¼ 746 (800-2¼)	1620-2½ 746 (800-2½)