

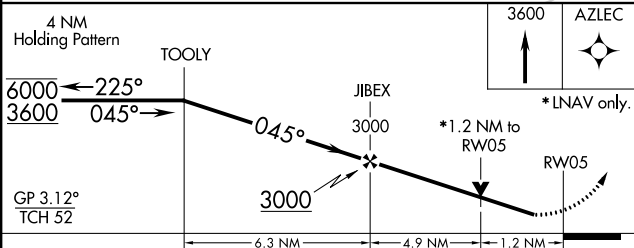
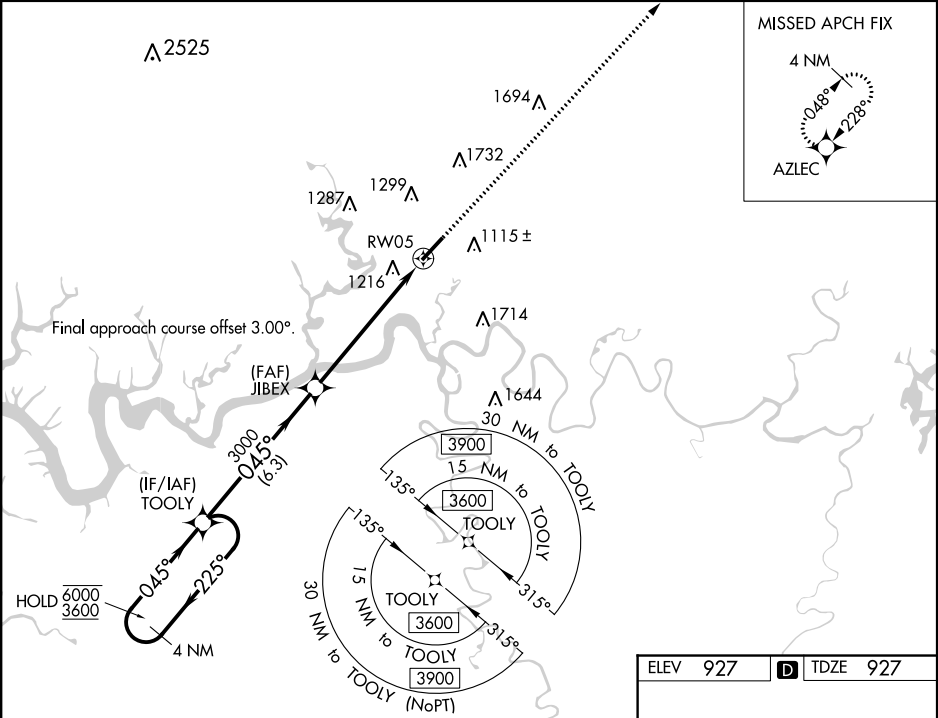
WAAS CH <b>65941</b> <b>W05A</b>	APP CRS <b>045°</b>	Rwy Idg TDZE <b>927</b> Apt Elev <b>927</b>
--	------------------------	---

**RNAV (GPS) RWY 5**  
LAKE CUMBERLAND RGNL (SME)

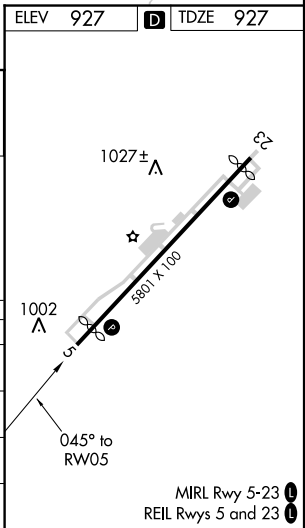
RNP APCH.

<p><b>⚠</b> Circling to Rwy 23 NA at night. Rwy 5 helicopter visibility reduction below ¾ SM NA. <b>⚠</b> For uncompensated Baro-VNAV systems, LNAV/VNAV NA below -16°C or above 54°C.</p>	<p><b>MISSED APPROACH:</b> Climb to 3600 direct AZLEC and hold.</p>
--	---

<b>AWOS-3</b> <b>120.050</b>	<b>INDIANAPOLIS CENTER</b> <b>124.625 371.925</b>	<b>UNICOM</b> <b>122.8 (CTAF) 0</b>
---------------------------------	--	--



CATEGORY	A	B	C	D
LPV DA		1177-¾	250 (300-¾)	
LNAV/VNAV DA		1547-1¾	620 (700-1¾)	
LNAV MDA	1480-1	553 (600-1)	1480-1½	553 (600-1½)
<b>C</b> CIRCLING	1580-1 653 (700-1)	1700-1 773 (800-1)	2100-3	1173 (1200-3)



SE-1, 31 DEC 2020 to 28 JAN 2021

SE-1, 31 DEC 2020 to 28 JAN 2021