

WAAS CH 61126 W22A	APP CRS 224°	Rwy Idg TDZE Apt Elev	5000 1662 1664
--	------------------------	-----------------------------	---

RNAV (GPS) RWY 22

ROCKWOOD MUNI (RKW)

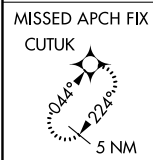
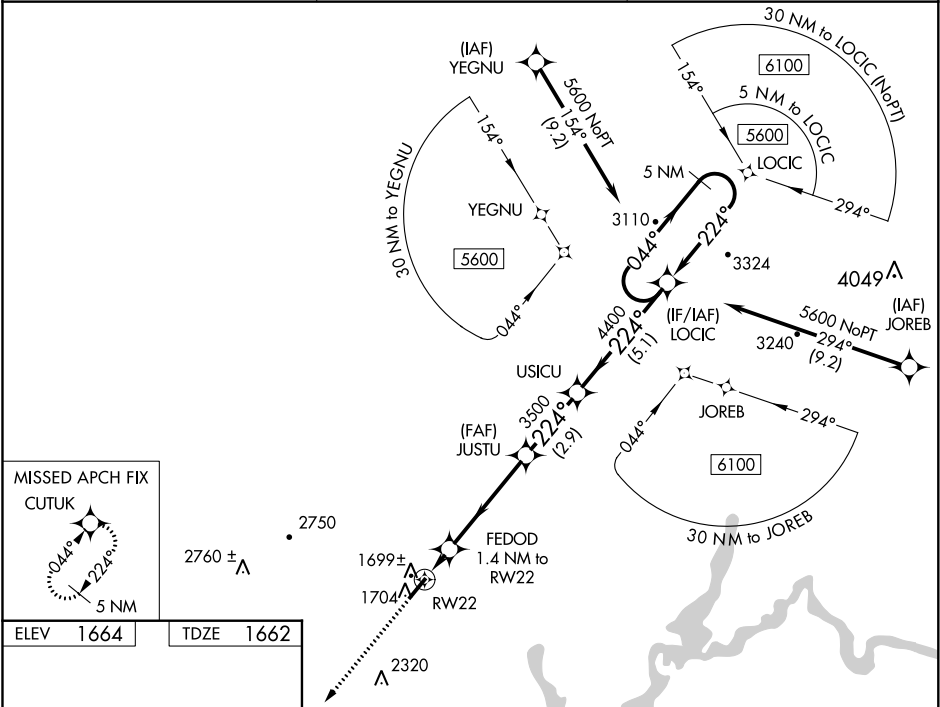
▼

▲ NA

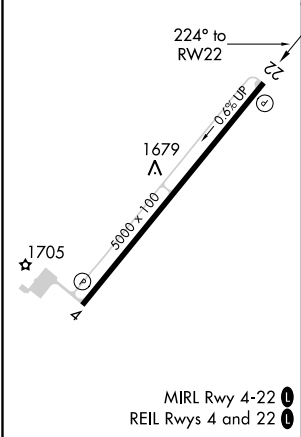
For uncompensated Baro-VNAV systems, LNAV/VNAV NA below -18°C (0°F) or above 33°C (91°F). DME/DME RNP-0.3 NA. When local altimeter setting not received, use Crossville altimeter setting and increase all DA 75 feet and all MDA 80 feet; increase LPV all Cats, LNAV/VNAV all Cats, LNAV Cat C and D and Circling Cat D visibility ¼ mile. Baro-VNAV and VDP NA when using Crossville altimeter setting.

MISSED APPROACH:
Climb to 5300 direct CUTUK and hold, continue climb-in-hold to 5300.

AWOS-3 118.775	ATLANTA CENTER 133.6 254.3	UNICOM 122.8 (CTAF) 0
--------------------------	--------------------------------------	---------------------------------



ELEV 1664	TDZE 1662
-----------	-----------



3300 CUTUK		VGSI and RNAV glidepath not coincident (VGSI Angle 3.00/TCH 31).		5 NM Holding Pattern	
*LNAV only.		FEDOD 1.4 NM to RW22		LOCIC	
RW22		JUSTU 3500		USICU	
2100 *		3500		5600	
1.4 NM		4.4 NM		2.9 NM	
CATEGORY		A		B	
LPV DA		1912-7/8		250 (300-7/8)	
LNAV/VNAV DA		1936-7/8		274 (300-7/8)	
LNAV MDA		1980-1		318 (400-1)	
CIRCLING		2080-1 416 (500-1)		2120-1 456 (500-1)	
		2160-1 496 (500-1 1/2)		2260-2 596 (600-2)	