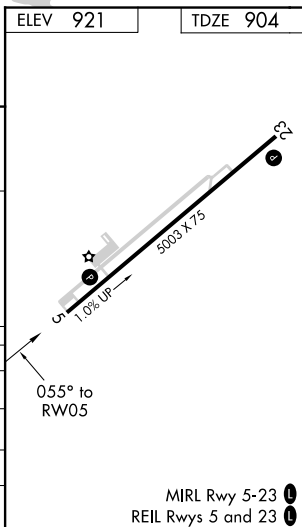



RNAV (GPS) RWY 5

TAYLOR COUNTY (AAS)

MISSED APPROACH:
Climb to 3000 direct
DOODA and hold.

UNICOM
122.7 (CTAF) **L**



CATEGORY		A		B		C		D	
LPV	DA	1154-1 250 (300-1)							
RNAV/ VNAV	DA	1389-1¾ 485 (500-1¾)							
RNAV	MDA	1340-1 436 (500-1)				1340-1¼ 436 (500-1¼)			
 CIRCLING		1380-1 459 (500-1)		1400-1 479 (500-1)		1480-1½ 559 (600-1½)		1660-2¼ 739 (800-2¼)	