

WAAS  
CH **97709**  
**W09A**

APP CRS  
**089°**

Rwy Idg  
TDZE  
Apt Elev

**5503**  
**385**  
**387**

**RNAV (GPS) RWY 9**

HENDERSON CITY-COUNTY (EHR)

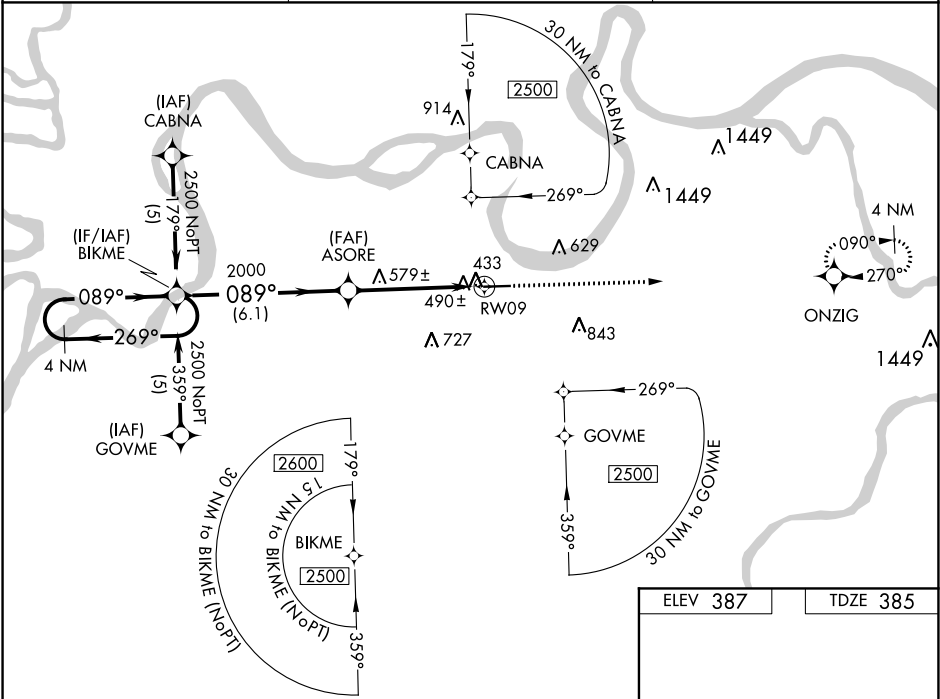
▼

▲

For uncompensated Baro-VNAV systems, LNAV/VNAV NA below -15°C or above 48° C. Rwy 9 helicopter visibility reduction below ¾ SM NA. Baro-VNAV and VDP NA when using Evansville altimeter setting. When local altimeter setting not received, use Evansville altimeter setting and increase all DA 41 feet and all MDA 60 feet and LPV all Cats, LNAV/VNAV all Cats and LNAV Cats C/D visibilities ¼ mile.

MISSED APPROACH:  
Climb to 2500 direct ONZIG and hold.

AWOS-3PT <b>118.85</b>	EVANSVILLE APP CON ★ <b>124.025 257.8</b>	UNICOM <b>122.8</b> (CTAF) <b>0</b>
---------------------------	--	--



4 NM Holding Pattern

BIKME

ASORE

2500

ONZIG

GP 3.00° TCH 47

2500

2000

6.1 NM

3.6 NM

1.3

\*1.3 NM to RW09

\*LNAV only.

5503 X 100

089° to RW09

CATEGORY	A	B	C	D
LPV DA	694-1 309 (400-1)			
LNAV/VNAV DA	774-1¼ 389 (400-1¼)			
LNAV MDA	840-1 455 (500-1)	840-1⅝ 455 (500-1⅝)	840-1½ 455 (500-1½)	

REIL Rwys 9 and 27 **0**  
MIRL Rwy 9-27 **0**