

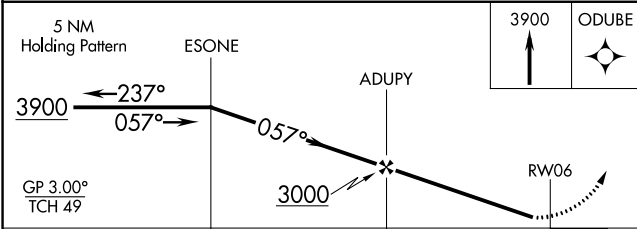
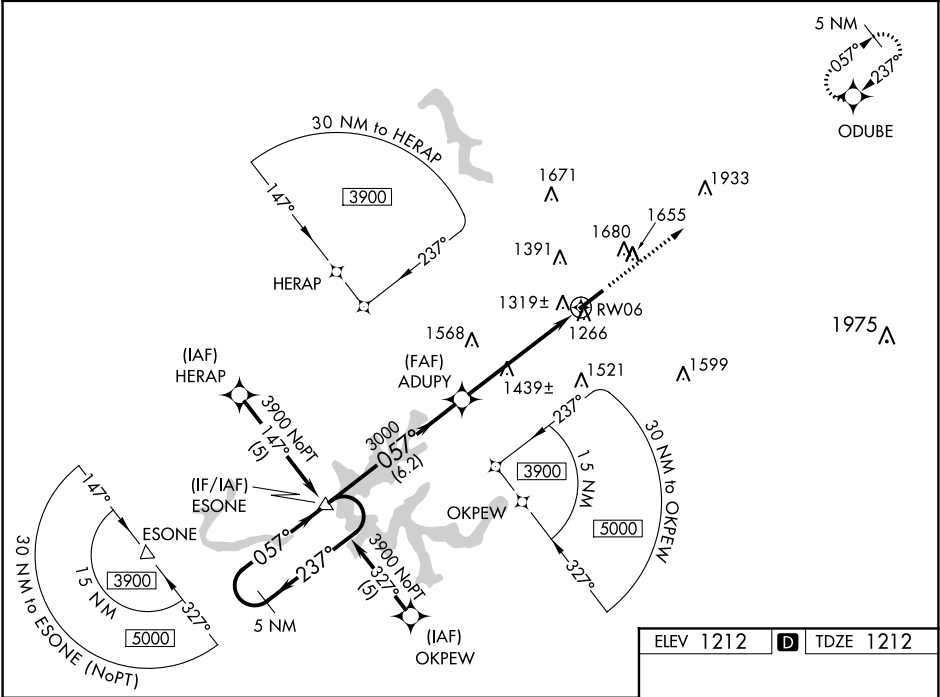
WAAS CH <b>65799</b> <b>W06A</b>	APP CRS <b>057°</b>	Rwy Idg TDZE <b>1212</b> Apt Elev <b>1212</b>
--	------------------------	---

RNAV (GPS) RWY 6

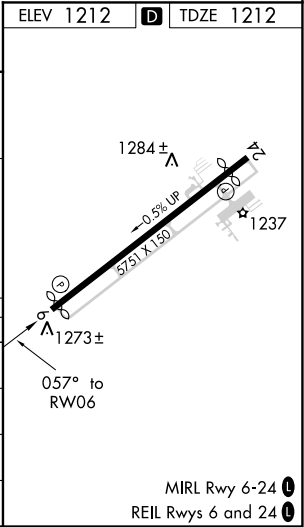
LONDON-CORBIN AIRPORT-MAGEE FIELD (LOZ)

<p><b>▼</b> <b>▲</b></p> <p>DME/DME RNP-0.3 NA. Visibility reduction by helicopters NA. When local altimeter setting not received, use Somerset altimeter setting and increase all DAs/MDAs 100 feet and increase visibility LPV ¼ mile all Cats, LNAV/VNAV ½ mile all Cats, LNAV Cat C ¼ mile and Cat D ½ mile, and Circling Cat C/D ¼ mile. For uncompensated Baro-VNAV systems, LNAV/VNAV NA below -17° C (2° F) or above 46° C (116° F) Baro-VNAV and VDP NA when using Somerset altimeter setting.</p>	<p>MISSED APPROACH: Climb to 3900 direct ODUBE and hold.</p>
---	--

ASOS <b>119.075</b>	INDIANAPOLIS CENTER <b>124.625 371.925</b>	UNICOM <b>123.0 (CTAF) 0</b>
------------------------	---	---------------------------------



CATEGORY	A	B	C	D
LPV DA		1466-1	254 (300-1)	
LNAV/VNAV DA		1602-1¼	390 (400-1¼)	
LNAV MDA	1720-1 508 (600-1)		1720-1½ 508 (600-1½)	
CIRCLING	1780-1 568 (600-1)		2040-2½ 828 (900-2½)	2040-2¾ 828 (900-2¾)



RNAV (GPS) RWY 6