


WAAS CH <b>45508</b> <b>W36A</b>	APP CRS <b>002°</b>	Rwy Idg TDZE <b>401</b> Apt Elev <b>407</b>
--	------------------------	---

RNAV (GPS) RWY 36

OWENSBORO-DAVIESS COUNTY RGNL (OWB)

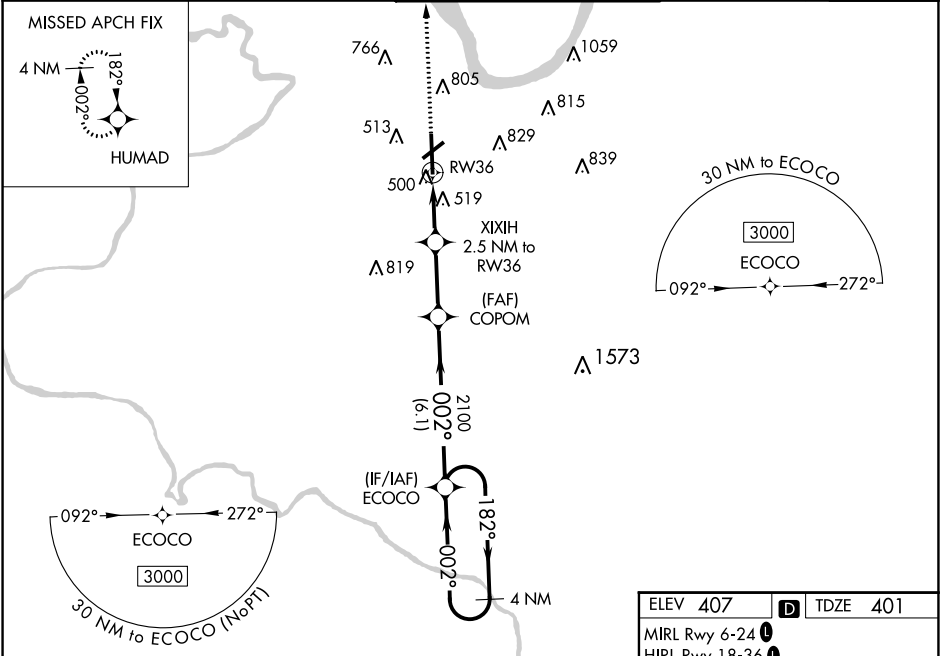
**⚠** For uncompensated Baro-VNAV systems, LNAV/VNAV NA below -15°C (5°F) or above 54°C (130°F). DME/DME RNP-0.3 NA. Baro-VNAV and VDP NA when using Evansville altimeter setting. When local altimeter setting not received, use Evansville altimeter setting: increase LPV DA to 656 feet; increase LNAV/VNAV DA to 720 feet and all Cats visibility 1/8 mile; increase all MDA 60 feet and LNAV Cats C/D and Circling Cats C/D visibility 1/4 mile.

MALSR



MISSED APPROACH:  
Climb to 3000 direct HUMAD and hold.

AWOS-3PT <b>119.025</b>	EVANSVILLE APP CON ★ <b>124.025 290.9</b>	OWENSBORO TOWER ★ <b>120.7 (CTAF) 0 251.15</b>	GND CON <b>121.7</b>	UNICOM <b>122.95</b>
----------------------------	--	---	-------------------------	-------------------------



4 NM Holding Pattern

ECOCO

COPOM

XIXIH

2100

3000

HUMAD

GP 3.00° TCH 56

182°

002°

002°

2100

1240

2.5 NM to RW36

1 NM to RW36

RW36

6.1 NM

2.7 NM

1.5 NM

1 NM

\* LNAV only.

CATEGORY

A

B

C

D

LPV DA

601-½

200 (200-½)

LNAV/VNAV DA

665-½

264 (300-½)

LNAV MDA

780-½

379 (400-½)

780-⅝

379 (400-⅝)

CIRCLING

860-1

880-1

1120-2

1140-2¼

453 (500-1)

473 (500-1)

713 (800-2)

733 (800-2¼)

425 TWR

486

466

8000 X 150

5000 X 100

36

002° to RW36

REIL Rws 6, 18, and 24