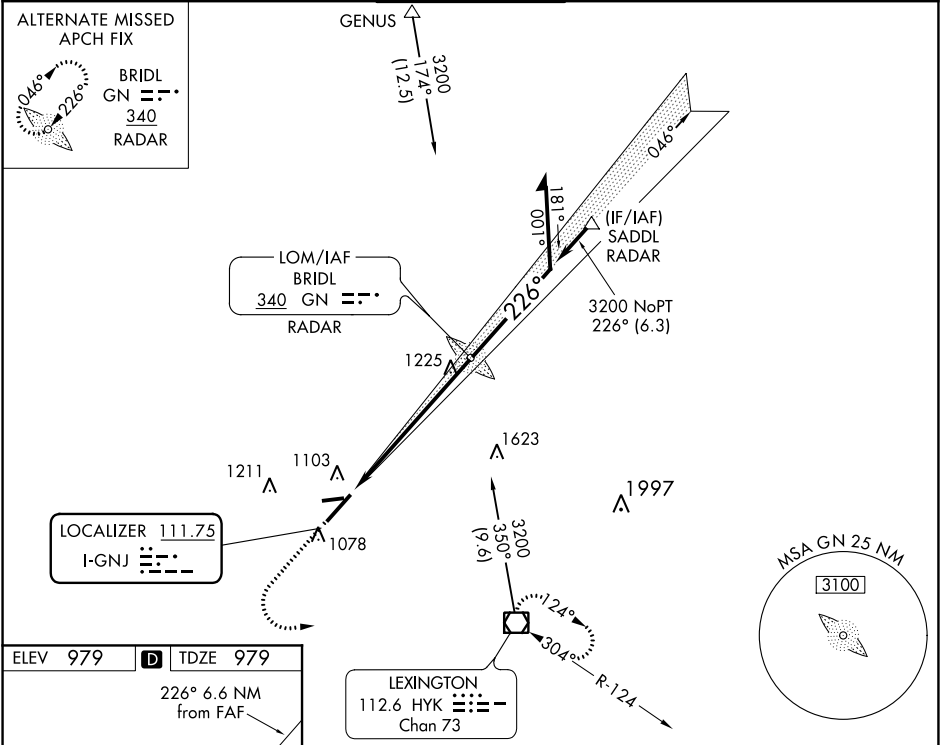


LOC I-GNJ <b>111.75</b>	APP CRS <b>226°</b>	Rwy Idg <b>6604</b> TDZE <b>979</b> Apt Elev <b>979</b>
----------------------------	------------------------	---




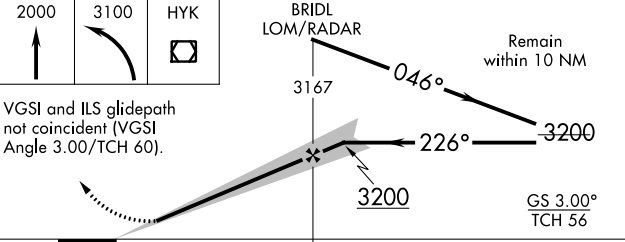

ILS or LOC RWY 22  
BLUE GRASS (LEX)

<p><b>⚠</b> Rwy 22 helicopter visibility reduction below ¾ SM NA. When local altimeter setting not received, use Frankfort altimeter setting: increase all DAs to 1291 feet and all visibilities ¼ SM; increase all MDAs 80 feet and visibility Cats C and D ¼ SM.</p>	<p><b>MISSED APPROACH:</b> Climb to 2000 then climbing left turn to 3100 direct HYK VOR/DME and hold.</p>
--	---

ATIS <b>126.3</b>	LEXINGTON APP CON <b>120.15 259.3</b>	LEXINGTON TOWER <b>119.1 257.8</b>	GND CON <b>121.9</b>	CLNC DEL <b>132.35</b>
----------------------	--	---------------------------------------	-------------------------	---------------------------



ELEV 979	<b>D</b>	TDZE 979
226° 6.6 NM from FAF		
1037± 0.6% UP		
7004 X 150		
TWR 1091		
TDZ/CL Rwy 4 REIL Rwy 9, 22 and 27 HIRL Rwy 4-22 MIRL Rwy 9-27		
FAF to MAP 6.6 NM		
Knots	60	90 120 150 180
Min:Sec	6:36	4:24 3:18 2:38 2:12

2000	3100	HYK		
				
VGSI and ILS glidepath not coincident (VGSI Angle 3.00/TCH 60).				
				
CATEGORY	A	B	C	D
S-ILS 22	1229- <sup>3</sup> / <sub>4</sub> 250 (300- <sup>3</sup> / <sub>4</sub> )			
S-LOC 22	1520-1 541 (600-1)	1520-1 <sup>1</sup> / <sub>2</sub> 541 (600-1 <sup>1</sup> / <sub>2</sub> )	1520-1 <sup>3</sup> / <sub>4</sub> 541 (600-1 <sup>3</sup> / <sub>4</sub> )	
 CIRCLING	1520-1 541 (600-1)	1520-1 <sup>1</sup> / <sub>2</sub> 541 (600-1 <sup>1</sup> / <sub>2</sub> )	1600-2 621 (700-2)	

SE-1, 31 DEC 2020 to 28 JAN 2021

SE-1, 31 DEC 2020 to 28 JAN 2021