

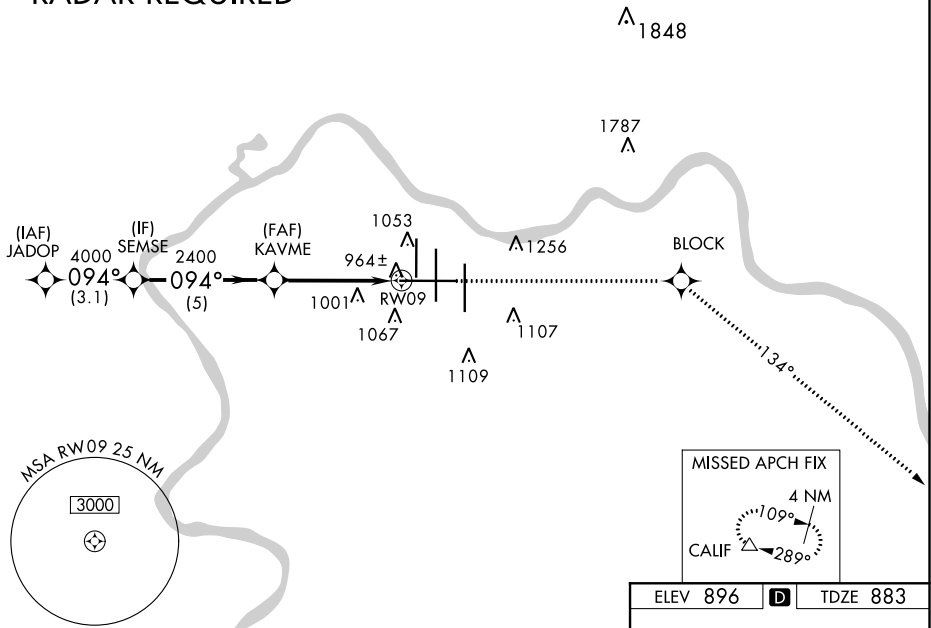
RNAV (GPS) Y RWY 9  
CINCINNATI/NORTHERN KENTUCKY INTL (CVG)

MALSR

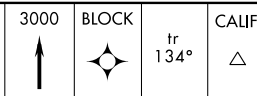
**MISSED APPROACH:** Climb to 3000 direct BLOCK and on 134° track to CALIF and hold.

D-ATIS		CINCINNATI APP CON		CINCINNATI TOWER		GND CON	CLNC DEL
ARR	DEP	119.7	363.15 (090°-269°)	118.975	360.85 (RWY 18L/36R)	121.7	127.175
134.375	135.3	123.875	363.15 (270°-089°)	118.3	(RWYS 18C/36C, 09/27)		
				133.325	(RWY 18R/36L)		

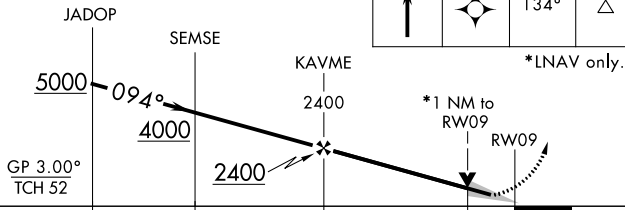
## RADAR REQUIRED



VGSI and RNAV glidepath not coincident (VGSI Angle 3.00/TCH 70).



\*LNAV only.



		← 3.1 NM	← 5 NM	← 3.5 NM	← 1 NM	←
CATEGORY		A	B	C	D	
LPV DA		1083/18 200 (200-½)				
LNAV/VNAV DA		1297/50 414 (500-1)				
LNAV MDA		1260/24 377 (400-½)				1260/50 377 (400-1)
CIRCLING		1460-1	564 (600-1)	1460-1½ 564 (600-1½)	1560-2 664 (700-2)	

