

WAAS CH 86803 W18B	APP CRS 184°	Rwy Idg 11000 TDZE 875 Apt Elev 896
--	------------------------	--

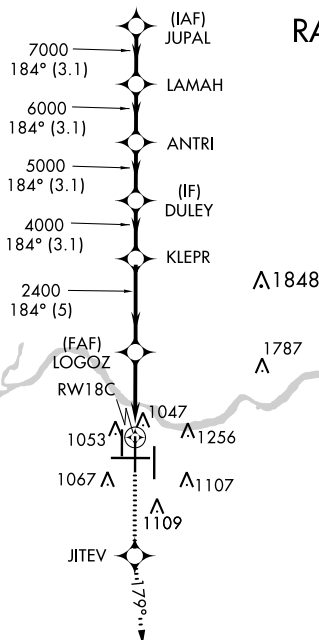
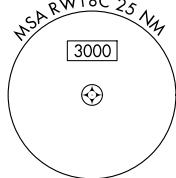
RNAV (GPS) Y RWY 18C
CINCINNATI/NORTHERN KENTUCKY INTL (CVG)

T For uncompensated Baro-VNAV systems, LNAV/VNAV NA below -16°C (4°F) or above 47°C (116°F). DME/DME RNP-0.3 NA. Simultaneous approach authorized with Rwy 18 L/R. LNAV procedure NA during simultaneous operations. Use of FD or AP providing RNAV track guidance required during simultaneous operations.

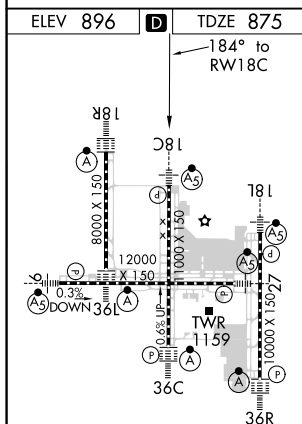
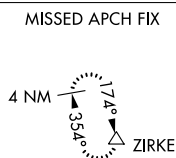
MALSR

MISSED APPROACH: Climb to 3000 direct JITEV and on 179° track to ZIRKE and hold.

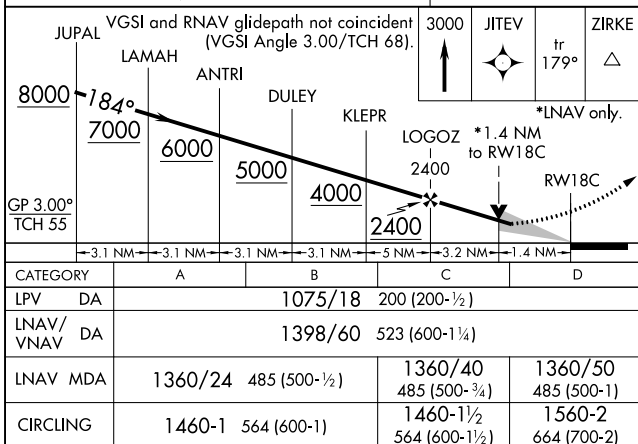
D-ATIS		CINCINNATI APP CON		CINCINNATI TOWER		GND CON	CLNC DEL
ARR	DEP	119.7	363.15 (090°-269°)	118.975	360.85 (RWY 18L/36R)	121.7	127.175
134.375	135.3	123.875	363.15 (270°-089°)	118.3	(RWYS 18C/36C, 09/27)		
				133.325	(RWY 18R/36L)		



RADAR REQUIRED



HIRL all Rwy's
TDZ/CL all Rwy's except 27



RNAV (GPS) Y RWY 18C