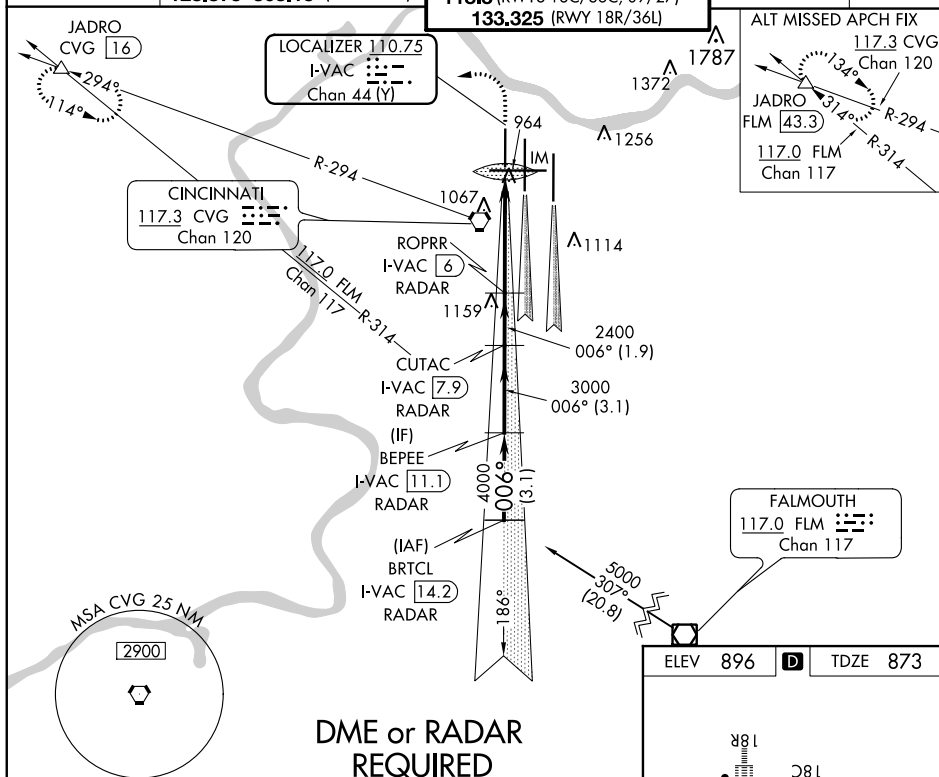


ILS RWY 36L (CAT II)
CINCINNATI/NORTHERN KENTUCKY INTL (CVG)

ALSF-2

MISSED APPROACH: Climb to 1300 then climbing left turn to 3000 via heading 270° and CVG R-294 to JADRO/CVG 16 DME and hold.

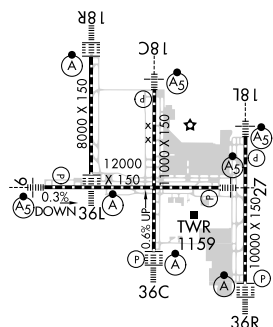
GND CON 121.7	CLNC DEL 127.175
-------------------------	----------------------------



DME or RADAR
REQUIRED

The diagram is a typical instrument approach chart for S-ILS-36L. It shows a series of waypoints and altitudes. The waypoints are BRTCL, I-VAC 14.2, RADAR, BEPEE, CUTAC 7.9, ROPRR 6, and IM. The altitudes are 5000, 4000, 3000, 2400, and 1056 feet. The chart includes a scale bar showing distances of 3.1 NM, 3.1 NM, 1.9 NM, 4.6 NM, and 1056 feet. The chart is titled 'S-ILS-36L' and 'RA 98/12 100 DA 973'. The chart also includes a table with the following information: CATEGORY, A, B, C, D; S-ILS-36L, RA 98/12 100 DA 973. The chart also includes a table with the following information: BRTCL, I-VAC 14.2, RADAR, BEPEE, CUTAC 7.9, ROPRR 6, IM, 1300, 3000, CVG R-294, JADRO, Procedure Turn NA, 5000, GS 3.00°, TCH 55, 3.1 NM, 3.1 NM, 1.9 NM, 4.6 NM, 1056', CATEGORY, A, B, C, D, S-ILS-36L, RA 98/12 100 DA 973.

CATEGORY II ILS - SPECIAL AIRCREW
& AIRCRAFT CERTIFICATION REQUIRED



HIRL all Rwys
TDZ/CL all Rwys except 27