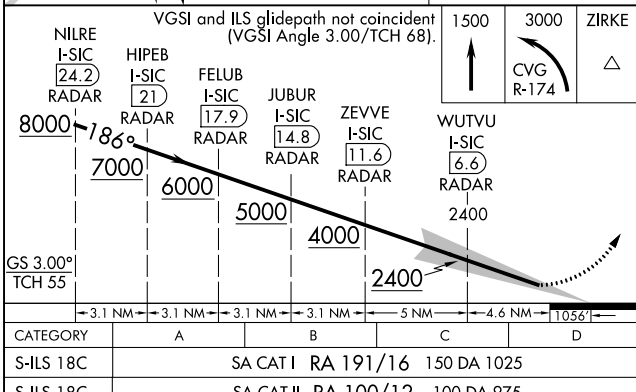


ILS RWY 18C (SA CAT I & II)
CINCINNATI/NORTHERN KENTUCKY INTL (CVG)

MISSED APPROACH: Climb to 1500 then climbing left turn to 3000 on CVG R-174 to ZIRKE INT/CVG 15.1 DME and hold.



CINCINNATI TOWER
118.975 360.85 (Rwy 18L/36R)
118.3 (Rwys 18C/36C, 09/27)
133.325 (Rwy 18R/36L)



SA CATEGORY I & II ILS-SPECIAL AIRCREW
& AIRCRAFT CERTIFICATION REQUIRED