

WAAS CH 61033 W32A	APP CRS 320°	Rwy Idg 5324 TDZE 409 Apt Elev 410
--	------------------------	---

RNAV (GPS) RWY 32

BARKLEY RGNL (PAH)

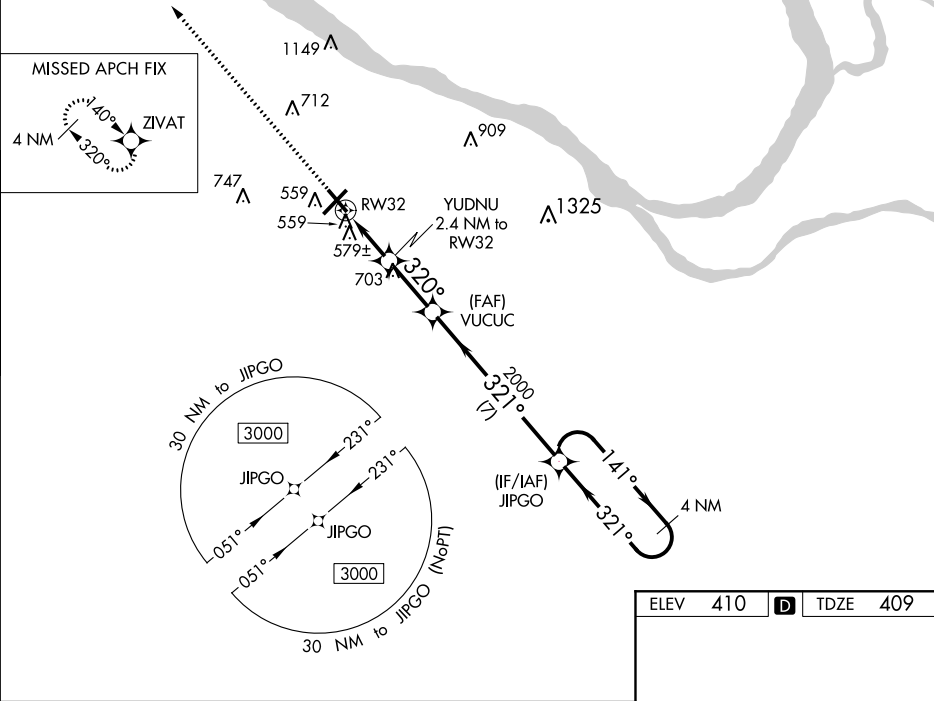
⚠

Circling to Rwy 14 NA at night. For uncompensated Baro-VNAV systems, LNAV/VNAV NA below -15°C (5°F) or above 54°C (130°F). DME/DME RNP-0.3 NA. When local altimeter setting not received, use Mayfield altimeter setting and increase all DA 61 feet; increase LPV and LNAV/VNAV all Cats visibility ¼ mile; increase all MDA 80 feet, LNAV Cats C and D visibility ½ mile and Circling Cat D visibility ½ mile. Helicopter visibility reduction below 1 SM NA. Straight-in minimums NA at night. Baro-VNAV NA when using Mayfield altimeter setting.

MISSED APPROACH:

Climb to 3000 direct ZIVAT and hold.

ASOS 118.375	MEMPHIS CENTER 133.65 292.15	PADUCAH TOWER ★ 119.6 (CTAF) 306.9	GND CON 121.7 306.9	UNICOM 122.95
------------------------	--	--	-------------------------------	-------------------------



3000	ZIVAT	VGSI and RNAV glidepath not coincident (VGSI Angle 3.00/TCH 40).			
*LNAV only	YUDNU 2.4 NM to RW32	VUCUC 2000	JIPGO	4 NM Holding Pattern	3000
	RW32	320°	321°	141°	GP 3.00° TCH 58
	2.4 NM	2.4 NM	7 NM		
CATEGORY	A	B	C	D	
LPV DA		740-1	331 (400-1)		
LNAV/VNAV DA		831-1 ¾	422 (500-1 ¾)		
LNAV MDA	840-1	431 (500-1)	840-1 ¼	431 (500-1 ¼)	
CIRCLING	880-1	470 (500-1)	880-1 ½	1100-2	
			470 (500-1 ½)	690 (700-2)	

