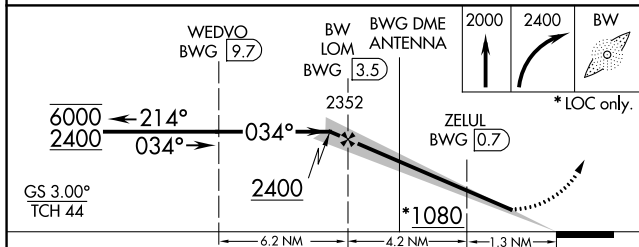
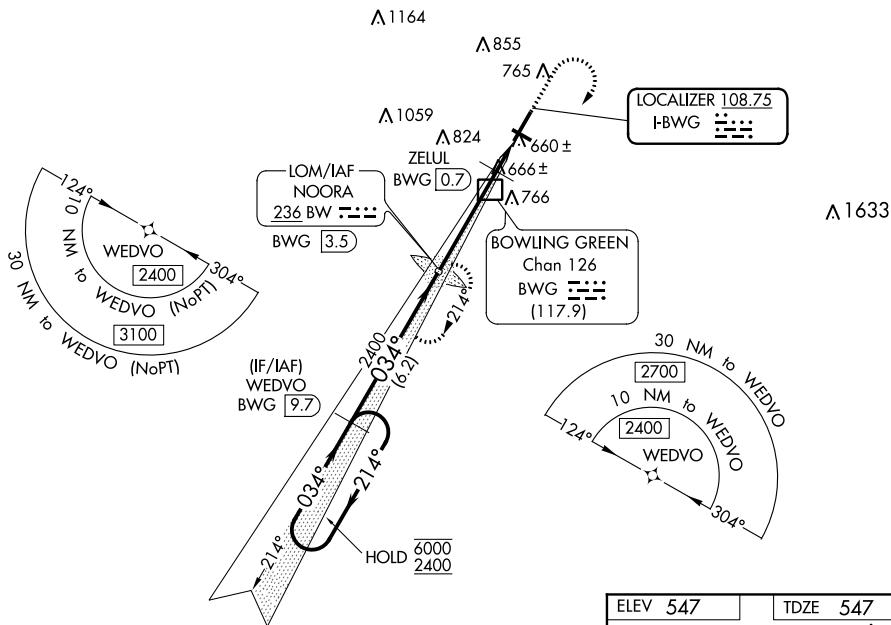


ILS Z or LOC Z RWY 3  
BOWLING GREEN-WARREN COUNTY RGNL (BWG)

**T** Circling Rwy 30 NA at night.  
\*\*DME from BWG DME.

**MISSED APPROACH:** Climb to 2000 then climbing right turn to 2400 direct NOORA LOM and hold.

ASOS <b>127.825</b>	MEMPHIS CENTER <b>133.85 317.6</b>	UNICOM <b>123.0 (CTAF) 0</b>
------------------------	---------------------------------------	---------------------------------



CATEGORY	A	B	C	D
S-ILS 3	747-3/4 200 (200-3/4)			
S-LOC 3	1080-1	533 (600-1)	1080-1 1/2	533 (600-1 1/2)
<b>C</b> CIRCLING	1080-1 533 (600-1)	1120-1 573 (600-1)	1160-1 3/4 613 (700-1 3/4)	1200-2 653 (700-2)
ZELUL FIX MINIMUMS **				
S-LOC 3	920-1 373 (400-1)			
<b>C</b> CIRCLING	1000-1 453 (500-1)	1120-1 573 (600-1)	1160-1 3/4 613 (700-1 3/4)	1200-2 653 (700-2)

