

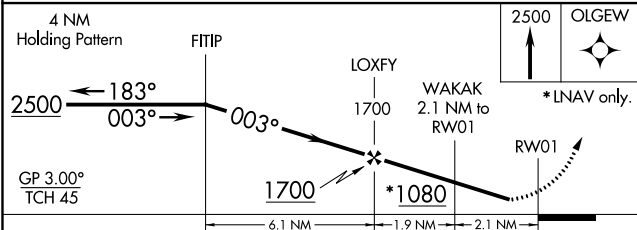
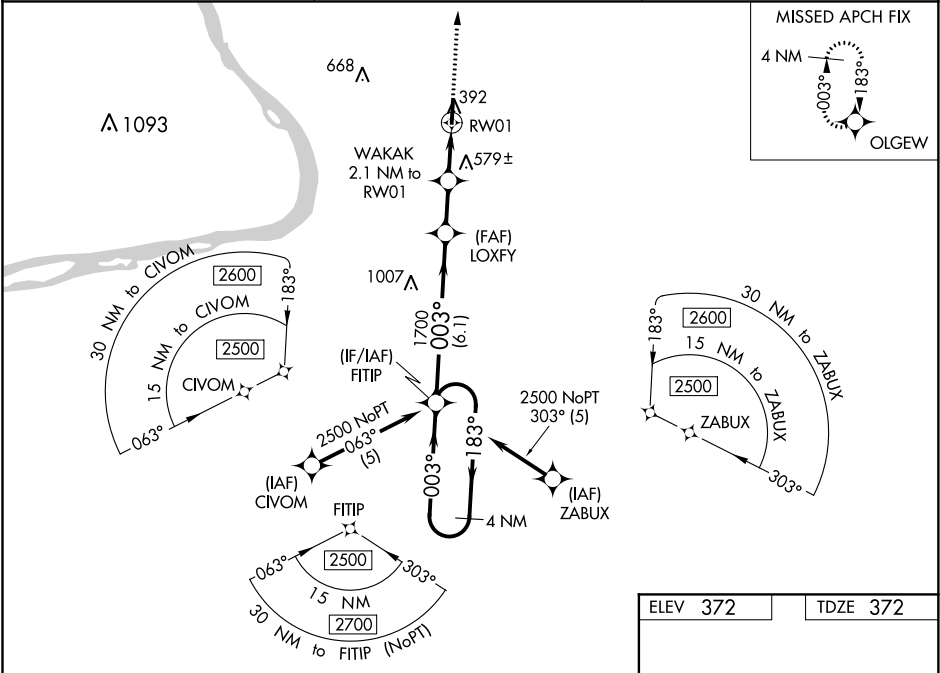
WAAS CH <b>49217</b> <b>W01A</b>	APP CRS <b>003°</b>	Rwy Idg <b>5000</b> TDZE <b>372</b> Apt Elev <b>372</b>
--	------------------------	---

RNAV (GPS) RWY 1  
STURGIS MUNI (TWT)

**NA** Baro-VNAV NA when using Henderson altimeter setting. For uncompensated Baro-VNAV systems, LNAV/VNAV NA below -15°C (5°F) or above 54°C (130°F). DME/DME RNP-0.3 NA. When local altimeter setting not received use Henderson altimeter setting and increase LPV DA to 708 and visibility all Cats to 1½ miles; increase LNAV/VNAV DA to 780 feet and visibility all Cats to 1¾ miles; increase all MDA 60 feet and Circling Cat C visibility ¼ mile. Helicopter visibility reduction below ¾ SM NA.

MISSED APPROACH:  
Climb to 2500 direct  
OLGEW and hold.

AWOS-3 <b>118.775</b>	EVANSVILLE APP CON ★ <b>124.025 290.9</b>	UNICOM <b>122.8 (CTAF) 0</b>
--------------------------	--	---------------------------------



CATEGORY	A	B	C	D
LPV DA	658-7/8 286 (300-7/8)			
LNAV/VNAV DA	730-1¼ 358 (400-1¼)			
LNAV MDA	820-1 448 (500-1)	820-1¾ 448 (500-1¾)		
CIRCLING	860-1 488 (500-1)	1000-1 628 (700-1)	1000-1¾ 628 (700-1¾)	1120-2½ 748 (800-2½)

