

APP CRS	Rwy Idg	4320
096°	TDZE	1519
	Apt Elev	1519

RNAV (GPS) RWY 9

TRI-CITIES (TRI)

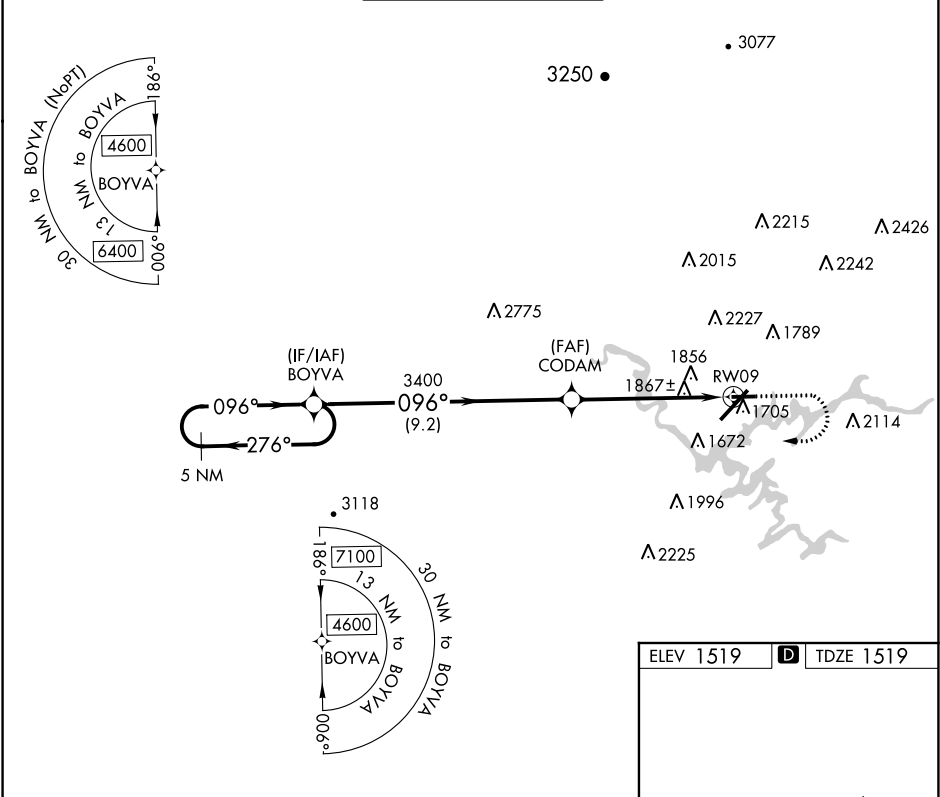
⚠

⚠

Circling NA NW of Rws 9 and 23. Rwy 9 helicopter visibility reduction below 1 SM NA. DME/DME RNP-0.3 NA. Straight-in Rwy 9 NA at night, Circling Rwy 9 NA at night.

MISSED APPROACH: Climb to 2000 then climbing right turn to 4600 direct BOYVA and hold.

ATIS	TRI-CITY APP CON ★	TRI-CITY TOWER ★	GND CON	UNICOM
118.25	134.425 349.0	119.5 (CTAF) 257.8	121.7 348.6	122.95



5 NM Holding Pattern		Visual Segment - Obstacles.		2000	4600	BOYVA
4600		276°		096°		CODAM
		3400		RW09		
		9.2 NM		5.8 NM		
CATEGORY	A	B	C	D		
LNAV MDA	2120-1	601 (700-1)	2120-1¾	601 (700-1¾)		
CIRCLING	2120-1 601 (700-1)	2180-1 661 (700-1)	2300-2¼ 781 (800-2¼)	2500-3 981 (1000-3)		

ELEV 1519 TDZE 1519

REIL Rws 5 and 27
HIRL Rwy 5-23
MIRL Rwy 9-27
TDZ/CL Rwy 23