

WAAS CH 49013 W20D	APP CRS 201°	Rwy Idg 8000 TDZE 551 Apt Elev 599
--	------------------------	---

RNAV (GPS) Y RWY 20L

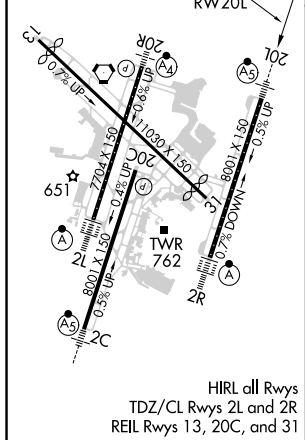
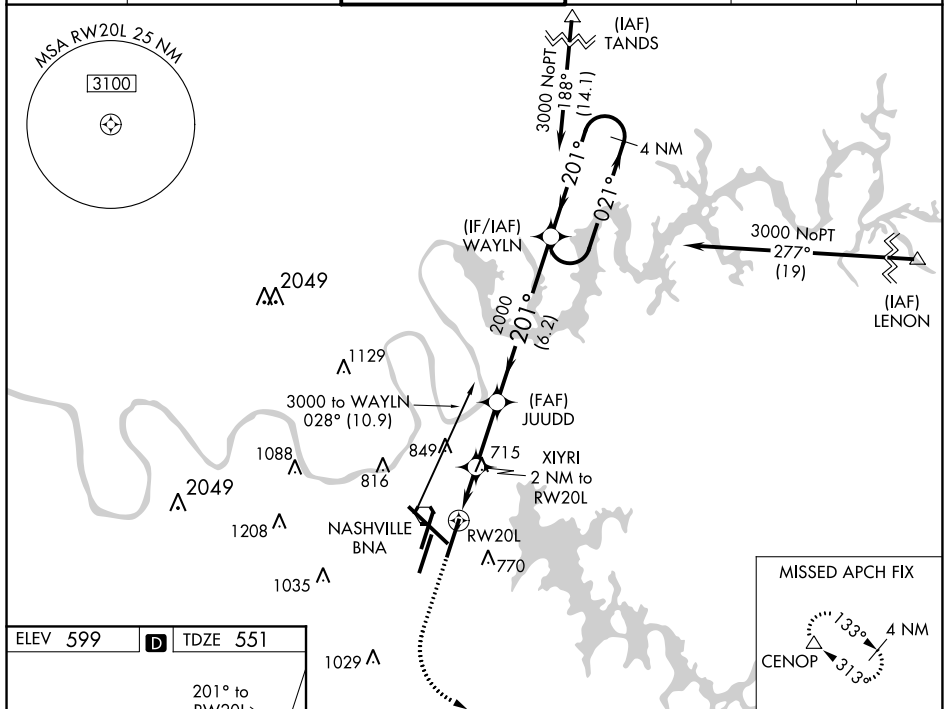
NASHVILLE INTL (BNA)

▼ For uncompensated Baro-VNAV systems, procedure NA below -11°C (13°F) or above 54°C (130°F). DME/DME RNP-0.3 NA. Simultaneous approach authorized with Rwy 20R. **▲** LNAV procedure NA during simultaneous operations. Use of FD or AP providing Rwy LNAV track guidance required during simultaneous operations. For inop MALSR, increase LNAV/VNAV or CATS visibility to 1%. **RVR 1800 authorized with use of FD or AP or HUD to DA.

MALSR

MISSED APPROACH:
Climb to 1300 then
climbing left turn to
4000 direct CENOP
and hold.

D-ATIS 135.1	NASHVILLE APP CON 118.4 360.7	NASHVILLE TOWER 118.6 257.8	GND CON 121.9 348.6	CLNC DEL 126.05	CPDLC
-----------------	----------------------------------	--------------------------------	------------------------	--------------------	-------



*** NPA only.**

Holding Pattern: 4 NM Holding Pattern, 201° → 3000, ← 201°, GP 3.00° TCH 47

Waypoint Details: WAYLN, JUDD 2000, XIYRI 2 NM to RW20L, *1.2 NM to RW20L, RW20L, 1220*, 2000

Leg Distances: 1.2 NM, 0.8 NM, 2.4 NM, 6.2 NM

CATEGORY	A	B	C	D
LPV DA	** 751/24 200 (200-½)			
LNAV/VNAV DA	1025/58 474 (500-1¼)			
LNAV MDA	980/24 429 (400-½)	980/40 429 (400-¾)		
C CIRCLING	1100-1 501 (600-1)	1120-1 521 (600-1)	1200-1¾ 601 (700-1¾)	1380-2½ 781 (800-2½)

RNAV (GPS) Y RWY 20L