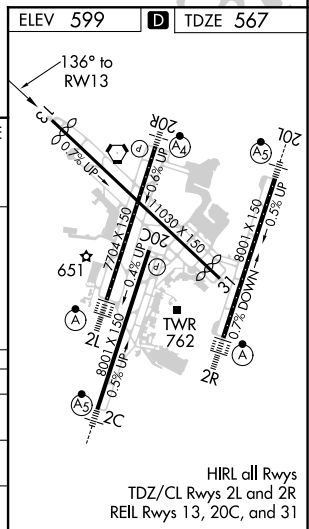
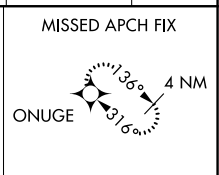



RNAV (GPS) RWY 13
NASHVILLE INTL (BNA)

T For uncompensated Baro-VNAV systems, LNAV/VNAV
A NA below -16°C or above 47°C.

MISSED APPROACH: Climb to 3000 direct ONUGE and hold.

CPDLC



CATEGORY	A	B	C	D
LNNAV/ VNAV DA	968-1½ 401 (400-1½)			
LNNAV MDA	1080-1	513 (500-1)	1080-1½ 513 (500-1½)	1080-1¾ 513 (500-1¾)
 CIRCLING	1100-1 501 (600-1)	1120-1 521 (600-1)	1200-1¾ 601 (700-1¾)	1380-2½ 781 (800-2½)

NASHVILLE INTL (BNA)
RNAV (GPS) RWY 13

SE-1, 31 DEC 2020 to 28 JAN 2021

SE-1, 31 DEC 2020 to 28 JAN 2021