

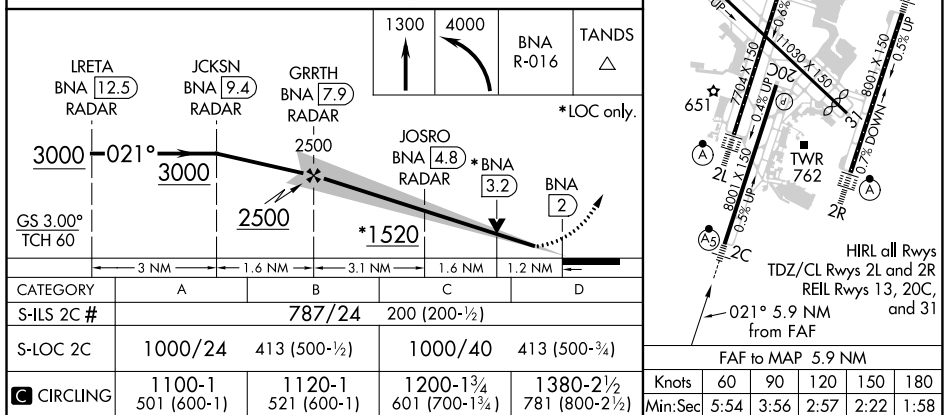
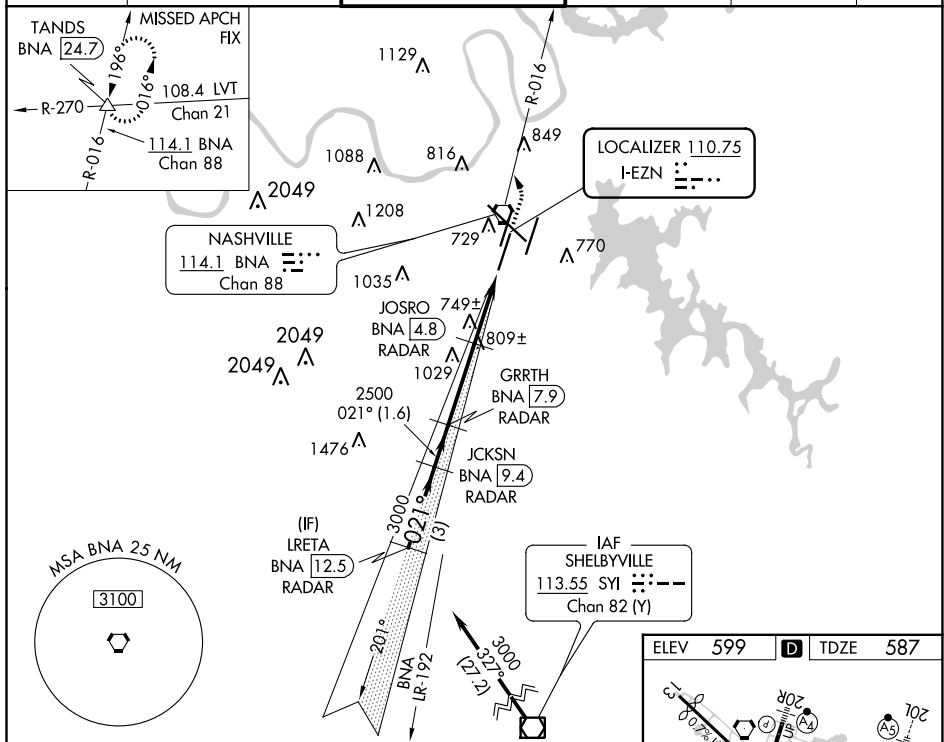
ILS or LOC RWY 2C
NASHVILLE INTL (BNA)

MALSR

MISSED APPROACH: Climb to 1300 then climbing left turn to 4000 on BNA VORTAC R-016 to TANDS INT/BNA 24.7 and hold.

T Simultaneous approach authorized. For inop ALS, increase S-LOC 2C
A Cats C and D visibility to RVR 6000. DME from BNA VORTAC.
 Simultaneous reception of I-EZN and BNA DME required.
 #RVR 1800 authorized with the use of FD or AP or HUD to DA.

CPDLC



SE-1, 31 DEC 2020 to 28 JAN 2021

SE-1, 31 DEC 2020 to 28 JAN 2021