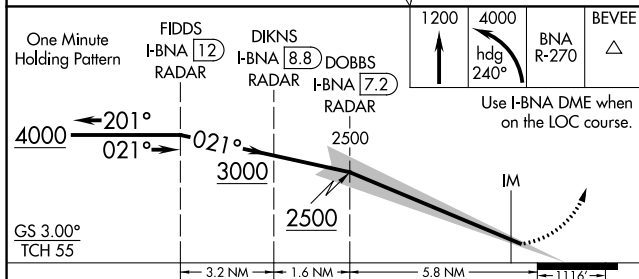


ILS RWY 2L (SA CAT I)  
NASHVILLE INTL (BNA)

- ALSF-2

**MISSED APPROACH:** Climb to 1200 then climbing left turn to 4000 on heading 240° and on BNA VORTAC R-270 to BEVEE/BNA 22.4 DME and hold.

DME or RADAR  
REQUIRED



CATEGORY	A	B	C	D
S-ILS 2L	RA 159/14 150 DA 749			

SA CATEGORY I ILS - SPECIAL AIRCREW  
& AIRCRAFT CERTIFICATION REQUIRED

[illegible]