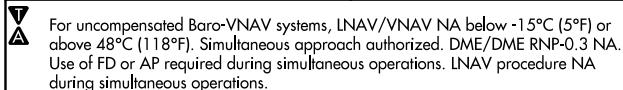


WAAS CH <b>97507</b> <b>W18D</b>	APP CRS <b>180°</b>	Rwy Idg <b>1120</b> TDZE <b>290</b> Apt Elev <b>341</b>
--	------------------------	---

RNAV (GPS) Z RWY 18C  
MEMPHIS INTL (MEM)

MEMPHIS INTL (MEM)



**MISSED APPROACH:** Climb to 5000 direct CEDEN and on track 137° to KEEZE and hold, continue climb-in-hold to 5000.

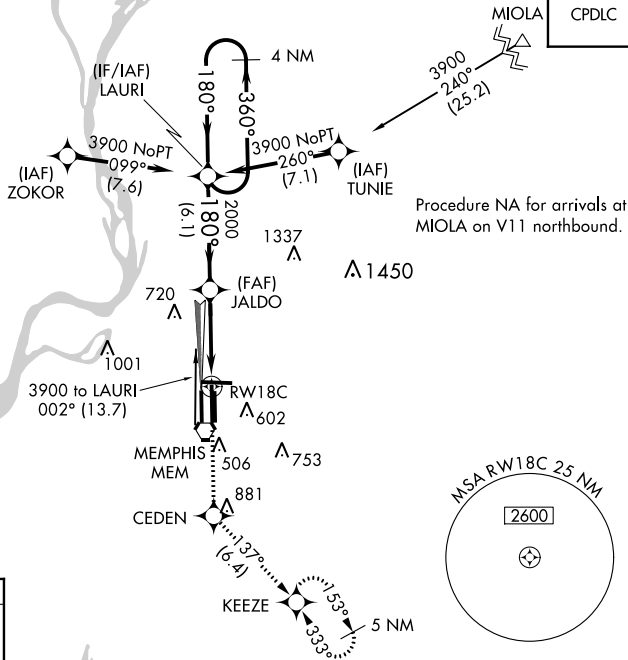
MEMPHIS APP CON	MEMPHIS TOWER		GND CON		CLNC DEL
<b>119.1 291.6</b> (176°-355°)	(Rwy 9-27)	<b>118.3 257.8</b>	(Rwy 9-27)	<b>121.0 379.2</b>	
	(Rwys 18C-36C, 18L-36R)	<b>119.7 257.8</b>	(Rwys 18C-36C, 18L-36R)	<b>121.9 379.2</b>	
<b>125.8 338.3</b> (356°-175°)	(Rwy 18R-36L)	<b>128.425 257.8</b>	(Rwy 18R-36L)	<b>121.65 379.2</b>	

D-ATIS  
127.75

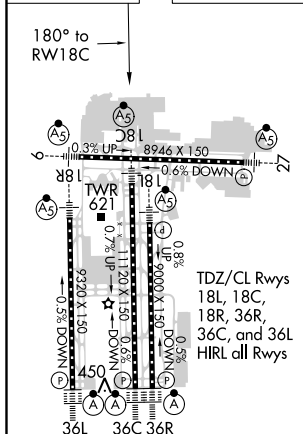
CPD



Procedure NA for arrival  
on GQE VOR/DME airway  
radials 050 CW 188.



ELEV 341	<b>D</b>	TDZE 290
----------	----------	----------



5000 ↑	CEDEN ✦	tr 137°	KEEZE ✦	LAURI 4 NM Holding Pattern			
*LNAV only	*1.8 NM to RW18C RW18C			JALDO 2000	360° → ← 180° 3900	GP 3.00° TCH 54	
1.8 NM    3.4 NM    6.1 NM							
CATEGORY	A		B		C		D
LPV DA	665/40 375 (400-¾)						
LNAV/VNAV DA	782/60 492 (500-1¼)						
LNAV MDA	880/24 590 (600-½)				880/50 590 (600-1)		880/60 590 (600-1¼)
<b>C</b> CIRCLING	940-1 599 (600-1)				940-1½ 599 (600-1½)		1020-2 ¼ 679 (700-2¼)

## RNAV (GPS) Z RWY 18C