

WAAS CH 49107 W36D	APP CRS 360°	Rwy Idg TDZE Apt Elev	9000 335 341
--	------------------------	-----------------------------	---

RNAV (GPS) RWY 36R

MEMPHIS INTL (MEM)

▼

⚠

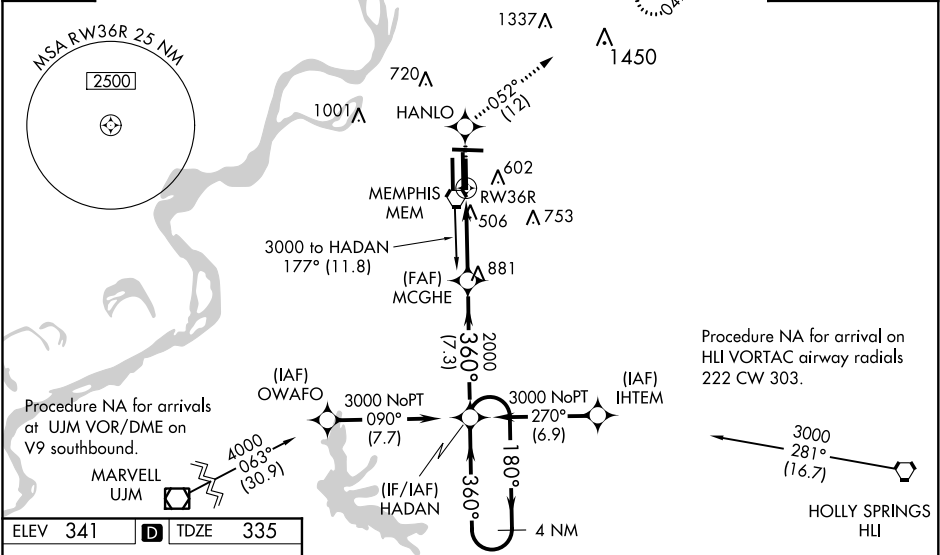
For uncompensated Baro-VNAV systems, LNAV/VNAV NA below -1.5°C (5°F) or above 48°C (118°F). Simultaneous approach authorized. DME/DME RNP-0.3 NA. LNAV procedure NA during simultaneous operations. Use of FD or AP required during simultaneous operations.

ALSF-2

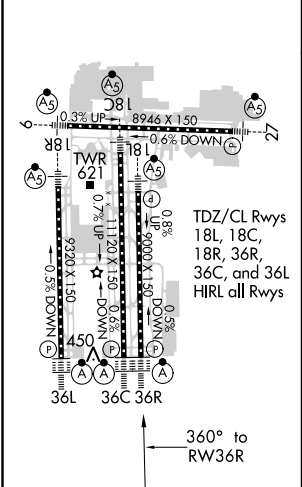
MISSED APPROACH: Climb to 5000 direct HANLO and on 052° track to OROCU and hold, continue climb-in-hold to 5000.

MEMPHIS APP CON	MEMPHIS TOWER	GND CON
119.1 291.6 (176°-355°)	(Rwy 9-27) 118.3 257.8	(Rwy 9-27) 121.0 379.2
125.8 338.3 (356°-175°)	(Rwys 18C-36C, 18L-36R) 119.7 257.8	(Rwys 18C-36C, 18L-36R) 121.9 379.2
	(Rwy 18R-36L) 128.425 257.8	(Rwy 18R-36L) 121.65 379.2

D-ATIS 127.75	CLNC DEL 125.2	CPDLC
-------------------------	--------------------------	-------



ELEV 341	D	TDZE 335
-----------------	----------	-----------------



5000	HANLO	tr 052°	OROCU	VGSI and RNAV glidepath not coincident (VGSI Angle 3.00/TCH 69).	4 NM
				HADAN	Holding Pattern
*LNAV only.					
*1.2 NM to RW36R					
RW36R					
MCGHE					
2000					
360°					
180°					
3000					
GP 3.00°					
TCH 58					
1.2 NM					
3.8 NM					
7.3 NM					
CATEGORY	A	B	C	D	
LPV DA	639/24 304 (300-1/2)				
LNAV/VNAV DA	763/50 428 (500-1)				
LNAV MDA	760/24	425 (500-1/2)	760/40	425 (500-3/4)	760/50
					425 (500-1)
CIRCLING	940-1	599 (600-1)	940-1 1/2	1020-2 1/4	1020-2 1/4
			599 (600-1 1/2)	679 (700-2 1/4)	

MEMPHIS INTL (MEM)

RNAV (GPS) RWY 36R

SE-1, 31 DEC 2020 to 28 JAN 2021

SE-1, 31 DEC 2020 to 28 JAN 2021