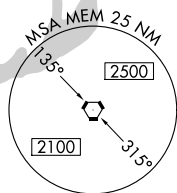
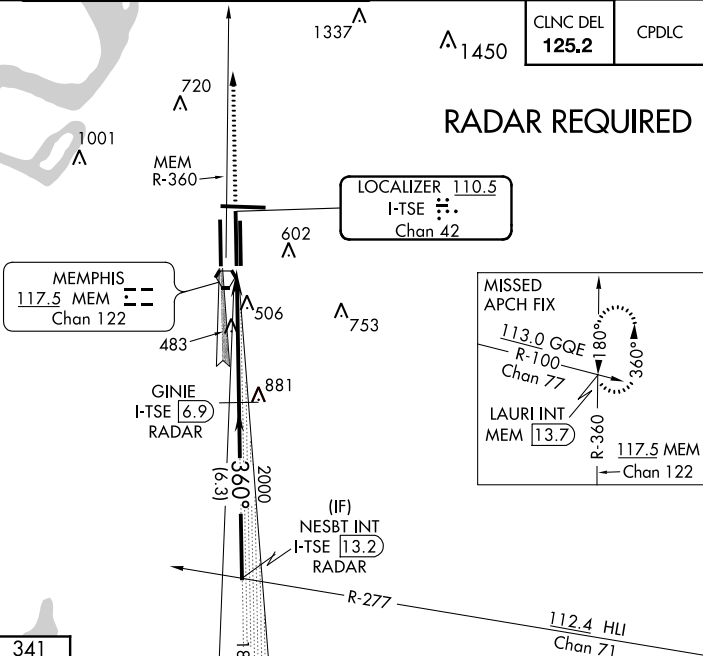
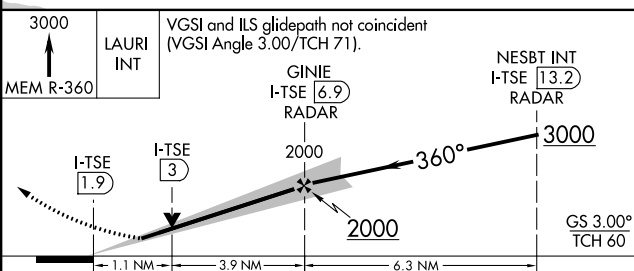


ILS or LOC RWY 36C
MEMPHIS INTL (MEM)

MISSED APPROACH: Climb to 3000
via MEM VORTAC R-360 to
LAURI INT/MEM 13.7 DME and hold.

D-ATIS 127.75		1337 Δ	Δ 1450	CLNC DEL 125.2	CPDLC
-------------------------	---	---------------	---------------	--------------------------	-------

[illegible]

CATEGORY	A	B	C	D	E
S-ILS 36C	541/18 200 (200-½)				541/24 200 (200-½)
S-LOC 36C	760/24 419 (500-½)	760/40 419 (500-¾)		760/50 419 (500-1)	
CIRCLING	940-1 599 (600-1)	940-1½ 599 (600-1½)	1020-2¼ 679 (700-2¼)	1140-2¾ 779 (800-2¾)	

SE-1, 31 DEC 2020 to 28 JAN 2021