

LOC I-JIM <u>108.7</u>	APP CRS 273°	Rwy ldg 8946 TDZE 292 Apt Elev 341
----------------------------------	------------------------	---

ILS or LOC RWY 27
MEMPHIS INTL (MEM)

T For inop ALS, increase S-ILS Cat E visibility to RVR 4000,
A and S-LOC Cat E visibility to 2 SM, IPEPE fix minimums
S-LOC Cat E visibility to 1¼ SM.
**RVR 1800 authorized with use of FD or AP or HUD to DA.

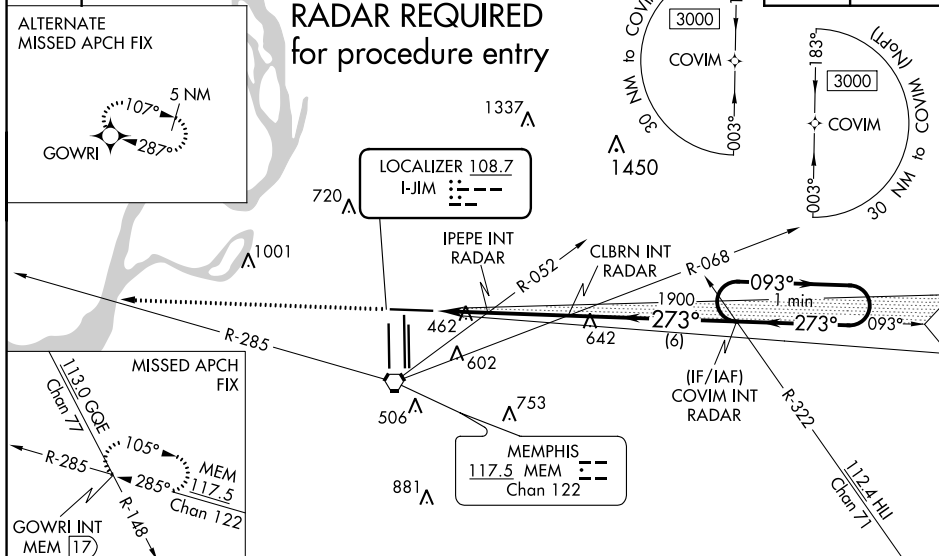
MALSR

MISSED APPROACH: Climb 5000 and intercept
MEM VORTAC R-285 to GOWRI INT/17 DME
and hold, continue climb-in-hold to 5000.

MEMPHIS APP CON			MEMPHIS TOWER		GND CON		
119.1	291.6	(176°-355°)	(Rwy 9-27)	118.3 257.8	(Rwy 9-27)	121.0 379.2	
125.8	338.3	(356°-175°)	(Rwys 18C-36C, 18L-36R)	119.7 257.8	(Rwys 18C-36C, 18L-36R)	121.9 379.2	
			(Rwy 18R-36L)	128.425 257.8	(Rwy 18R-36L)	121.65 379.2	

D-ATIS 127.75	RNAV 1-GPS or	CLNC DEL 125.2	CPDLC
-------------------------	---------------	--------------------------	-------

RNAV 1-GPS or
RADAR REQUIRED
for procedure entry



FAF to MAP 4.9 NM

Knots	60	90	120	150	180
Min:Sec	4:54	3:16	2:27	1:58	1:38

MEMPHIS, TENNESSEE
Amdt 4C 29MAR18

35°03'N-89°59'W

MEMPHIS INTL (MEM)
ILS or LOC RWY 27

SE-1, 31 DEC 2020 to 28 JAN 2021

SE-1, 31 DEC 2020 to 28 JAN 2021