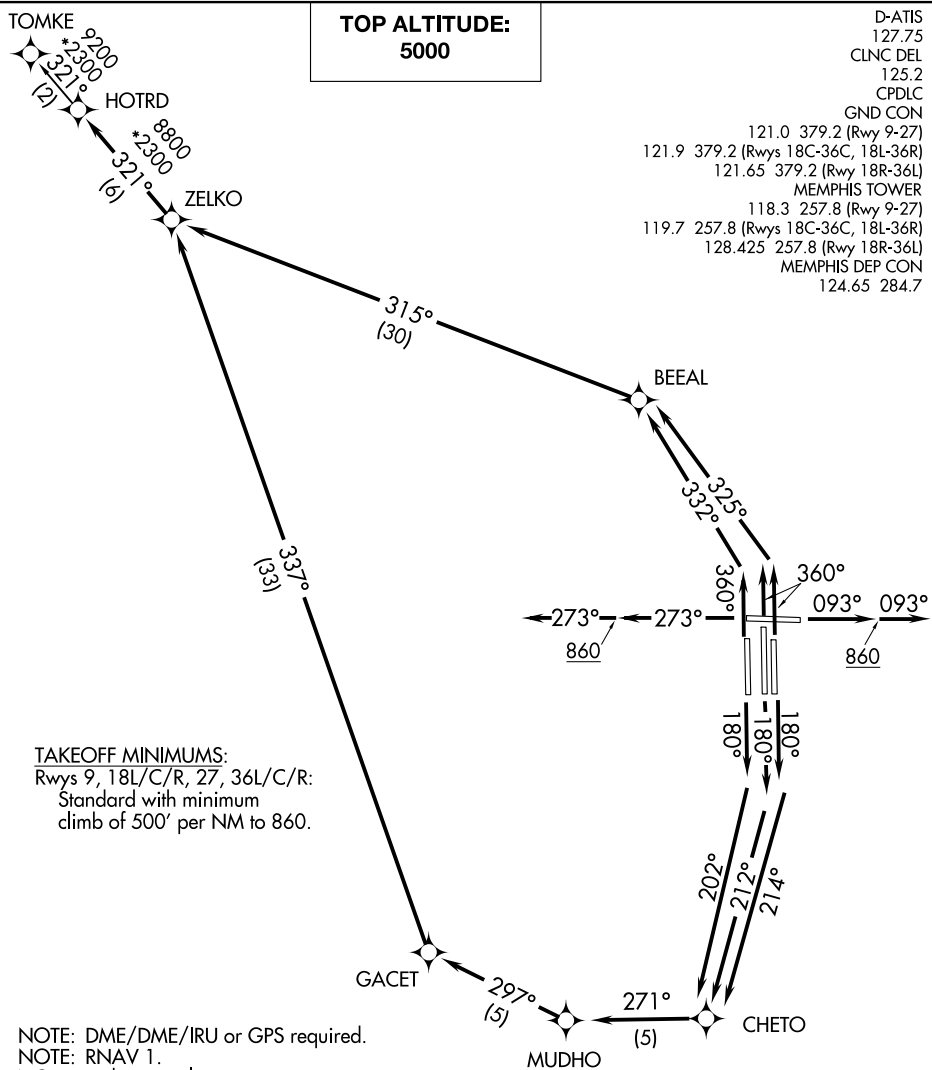


MEMPHIS, TENNESSEE



TAKEOFF MINIMUMS:
Rwys 9, 18L/C/R, 27, 36L/C/R:
Standard with minimum
climb of 500' per NM to 860.

- NOTE: DME/DME/IRU or GPS required.
NOTE: RNAV 1.
NOTE: Turbojets only.
NOTE: Takeoff Rwy 18L/C/R, 36L/C/R: Radar required for non-GPS equipped aircraft.
NOTE: Takeoff Rwy 9, 27: Radar required.
NOTE: Transponder code will be issued via PDC or Memphis clearance delivery.
NOTE: Procedure authorized 0200-0600 local only.
NOTE: Accelerate to 250K, reaching 10000 MSL, maintain 250K or greater, if unable advise ATC.
NOTE: If unable to accept climb rates, advise ATC on initial contact.

(NARRATIVE ON FOLLOWING PAGE)

NOTE: Chart not to scale.

HOTRD FIVE DEPARTURE (RNAV)

(HOTRD5.HOTRD) 31DEC20

MEMPHIS, TENNESSEE
MEMPHIS INTL (MEM)