

D-ATIS
127.75
CLNC DEL

125.2

CPDLC

GND C

121.0 379

121.9 379.2 (R_{wys} 18C-

121.65.379.2 (Rwv 18R-361)

MEMPHIS TOWER

118.3 257.8 (R_W)

119.7 257.8 (R_{WYS} 18C)

128.425 257.8 (R_w 18R-361)

MEMPHIS DEP CON

124 15 385 45

124.15 505.45

TOP ALTITUDE:
5000

TAKEOFF MINIMUMS:

Rwy 9, 18L/C/R, 27, 36L/C/R:

Standard with minimum climb of 500' per NM to 860.

NOTE: DME/DME/IRU or GPS required.

NOTE: RNAV 1.

NOTE: Turbojets only.

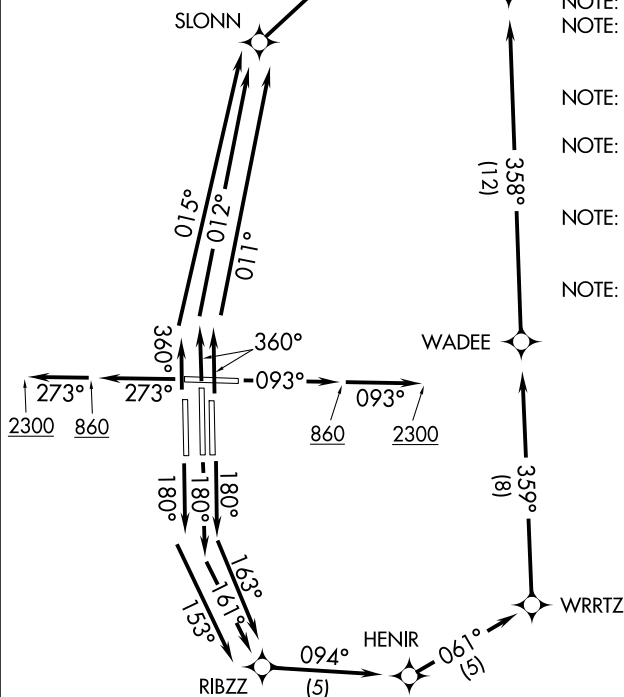
NOTE: Takeoff Rwy 18L/C/R, 36L/C/R -
RADAR required for non-GPS
equipped aircraft.

NOTE: Takeoff Rwy 9, 27 - RADAR required.

NOTE: Transponder code will be issued via PDC or Memphis clearance delivery.

NOTE: Accelerate to 250K, reaching 10000 MSL, maintain 250K or greater, if unable advise ATC.

NOTE: If unable to accept climb rate, advise ATC on initial contact.



NOTE: Chart not to scale.

(NARRATIVE ON FOLLOWING PAGE)

CRSON SEVEN DEPARTURE (RNAV)

(CRSON7.CRSON) 31DEC20

MEMPHIS, TENNESSEE

MEMPHIS INTL (MEM)

SE-1, 31 DEC 2020 to 28 JAN 2021