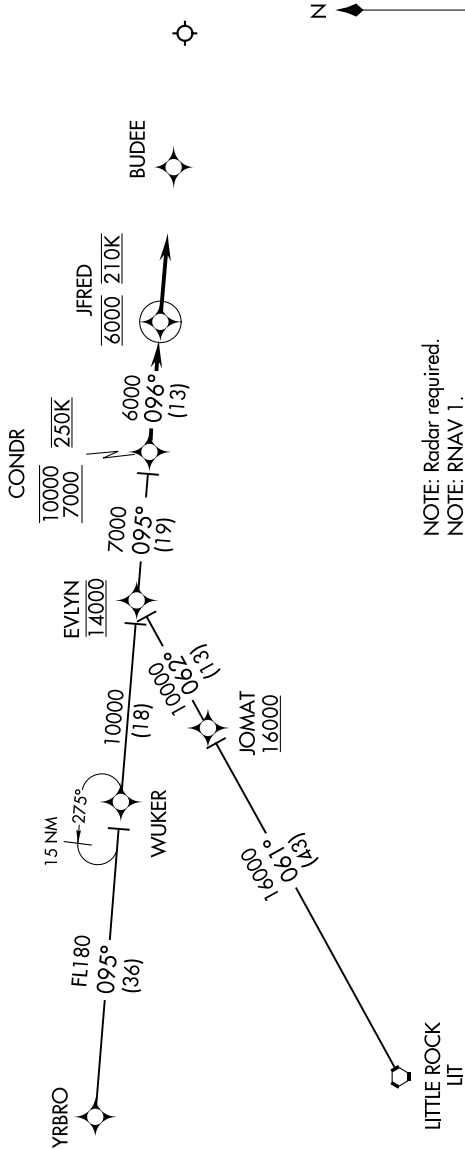


MEMPHIS APP CON  
119.1 291.6 (176°-355°)  
125.8 338.3 (356°-175°)  
D-ATIS  
127.75

ARRIVAL ROUTE DESCRIPTION

EVLYN TRANSITION (EVLYN.CONDR3);  
LITTLE ROCK TRANSITION (LIT.CONDR3);  
YRBRO TRANSITION (YRBRO.CONDR3);

From over CONDR on track 096° to JFRED, cross JFRED at 6000 at 210K,  
then on track 096°. Expect radar vectors to final approach course.



NOTE: Chart not to scale.