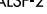


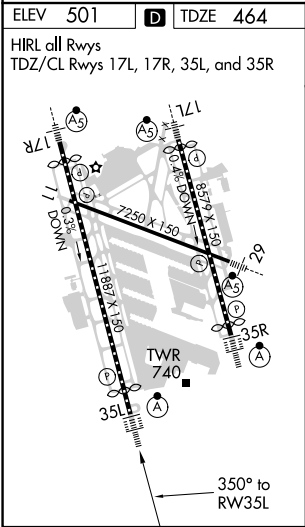
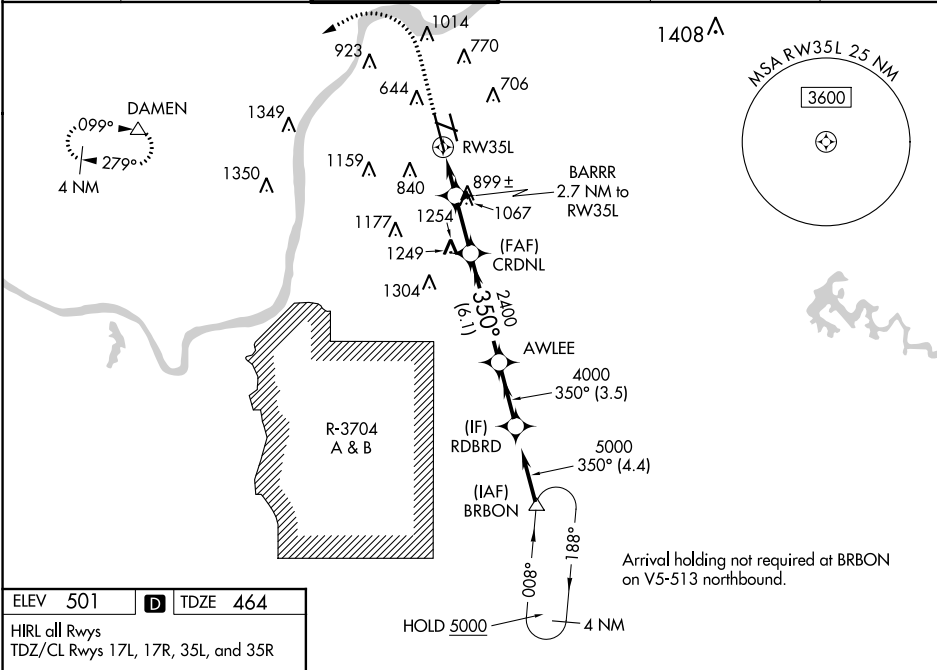


WAAS CH 86203 W35A	APP CRS 350°	Rwy Idg 10000 TDZE 464 Apt Elev 501
--	------------------------	--

RNAV (GPS) Y RWY 35L
LOUISVILLE MUHAMMAD ALI INTL (SDF)

RNP APCH.				ALS F-2 	MISSED APPROACH: Climb to 1000 then climbing left turn to 3000 direct DAMEN and hold.
<div> Circling Rwy 11 NA at night. Simultaneous approach authorized.</div> <div> LNAV procedure NA during simultaneous operations. Use of FD or AP required during simultaneous operations. For uncompensated Baro-VNAV systems, LNAV/VNAV NA below -14°C or above 54°C. For inop ALS, increase LNAV Cats C/D visibility to 1½ SM.</div>					
D-ATIS 118.725	LOUISVILLE APP CON 132.075 327.0	LOUISVILLE TOWER 124.2 257.8	GND CON 121.7 348.6	CLNC DEL 126.1 275.8	CPDLC



1000	3000	DAMEN	VGSi and RNAV glidepath not coincident (VGSi Angle 3.00/TCH 75).			
↑	↪	△				
* LNAV only.						
RW35L						
BARRR 2.7 NM to RW35L						
* 1.5 NM to RW35L						
CRDNL 2400						
AWLEE 4000						
RDBRD 5000						
GP 3.00° TCH 59						
CATEGORY						
LPV DA						
LNAV/VNAV DA						
LNAV MDA						
CIRCLING						

SE-1, 31 DEC 2020 to 28 JAN 2021

SE-1, 31 DEC 2020 to 28 JAN 2021