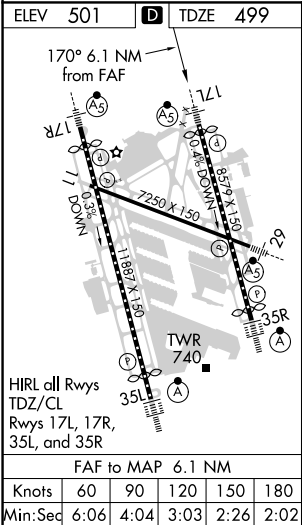
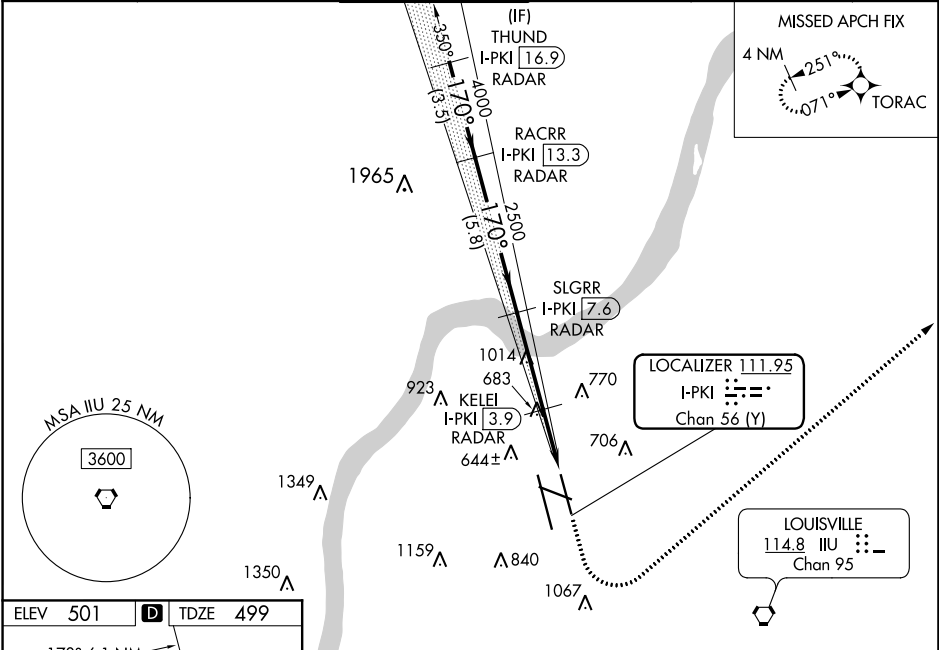


| | | |
|--|------------------------|---|
| LOC/DME I-PKI 111.95 Chan 56 (Y) | APP CRS 170° | Rwy Idg TDZE 499 Apt Elev 501 |
|--|------------------------|---|

ILS or LOC RWY 17L
LOUISVILLE MUHAMMAD ALI INTL (SDF)

| | | |
|--|-----------|---|
| RNAV 1-GPS required. DME or RADAR required. | MALSR | MISSED APPROACH: Climb to 1600 then climbing left turn to 4000 direct TORAC and hold. |
| Circling Rwy 11 NA at night. Simultaneous approach authorized. For inop ALS, increase S-LOC 17L Cat C/D visibility to 1 3/8 SM. | | |

| | | | | | |
|--------------------------|--|--|-------------------------------|--------------------------------|-------|
| D-ATIS 118.725 | LOUISVILLE APP CON 132.075 327.0 | LOUISVILLE TOWER 124.2 257.8 | GND CON 121.7 348.6 | CLNC DEL 126.1 275.8 | CPDLC |
|--------------------------|--|--|-------------------------------|--------------------------------|-------|



| | | | | |
|---|------------------------|-----------------------|-------------------------------|-----------------------|
| VGSI and ILS glidepath not coincident (VGSI Angle 3.32/TCH 71). | | 1600 | 4000 | TORAC |
| | | | | |
| | | *LOC only. | | |
| THUND I-PKI 16.9 RADAR | RACRR I-PKI 13.3 RADAR | SLGRR I-PKI 7.6 RADAR | KELEI I-PKI 3.9 RADAR | I-PKI 2.7 |
| 5000 | 4000 | 2500 | 1320 | 1000 |
| GS 3.00° TCH 55 | 3.5 NM | 5.8 NM | 3.6 NM | 1.3 NM |
| CATEGORY | A | B | C | D |
| S-ILS 17L | 699/18 | | 200 (200-1/2) | |
| S-LOC 17L | 1000/24 | 501 (500-1/2) | 1000/55 | 501 (500-1) |
| CIRCLING | 1040-1 539 (600-1) | 1140-1 639 (700-1) | 1160-1 3/4 659 (700-1 3/4) | 1400-3 899 (900-3) |

SE-1, 31 DEC 2020 to 28 JAN 2021

SE-1, 31 DEC 2020 to 28 JAN 2021