

CRRGO FOUR DEPARTURE (RNAV)

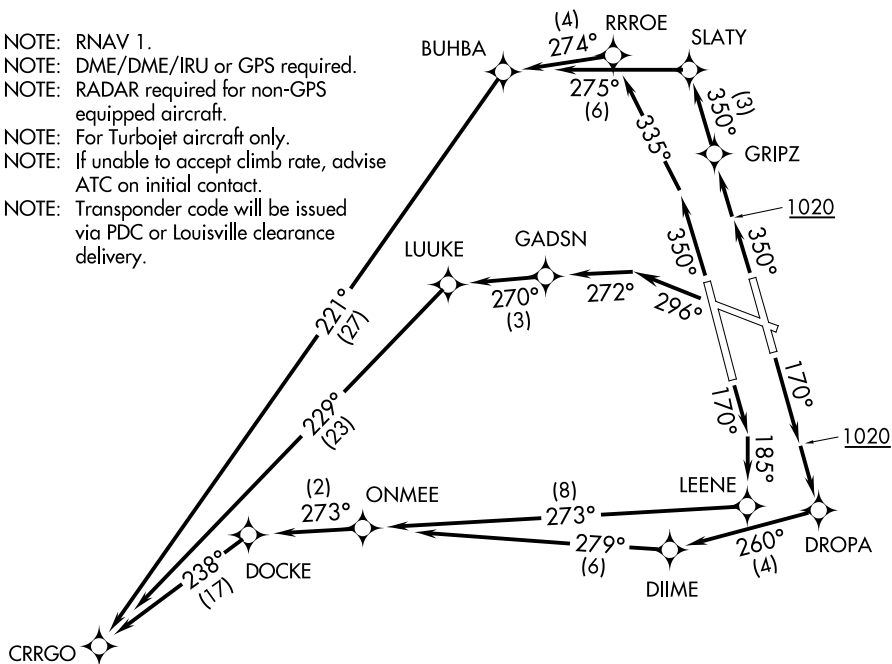
D-ATIS 118.725
CLNC DEL
126.1 275.8
CPDLC
GND CON
121.7 348.6
LOUISVILLE TOWER
124.2 257.8
LOUISVILLE DEP CON
132.075 327.0

TAKEOFF MINIMUMS:

Rwys 17L/R, 29, 35L/R: Standard with minimum climb of 500' per NM to 1020.

TOP ALTITUDE:
5000

NOTE: RNAV 1.
NOTE: DME/DME/IRU or GPS required.
NOTE: RADAR required for non-GPS
equipped aircraft.
NOTE: For Turbojet aircraft only.
NOTE: If unable to accept climb rate, advise
ATC on initial contact.
NOTE: Transponder code will be issued
via PDC or Louisville clearance
delivery.



NOTE: Chart not to scale.

DEPARTURE ROUTE DESCRIPTION

TAKEOFF RUNWAY 17L: Climb heading 170° to 1020, then direct DROPA, then on depicted route to CRRGO, thence....

TAKEOFF RUNWAY 17R: Climb heading 170° to intercept course 185° to LEENE, then on depicted route to CRRGO, thence....

TAKEOFF RUNWAY 29: Climb heading 296° to intercept course 272° to GADSN, then on depicted route to CRRGO, thence....

TAKEOFF RUNWAY 35L: Climb heading 350° to intercept course 335° to RRROE, then on depicted route to CRRGO, thence....

TAKEOFF RUNWAY 35R: Climb heading 350° to 1020, then direct GRIPZ, then on depicted route to CRRGO, thence....

....maintain 5000. Expect clearance to filed altitude 10 minutes after departure.

CRRGO FOUR DEPARTURE (RNAV)

(CRRGO4.CRRGO) 15AUG19

LOUISVILLE, KENTUCKY
LOUISVILLE MUHAMMAD ALI INTL (SDF)

SE-1, 31 DEC 2020 to 28 JAN 2021