

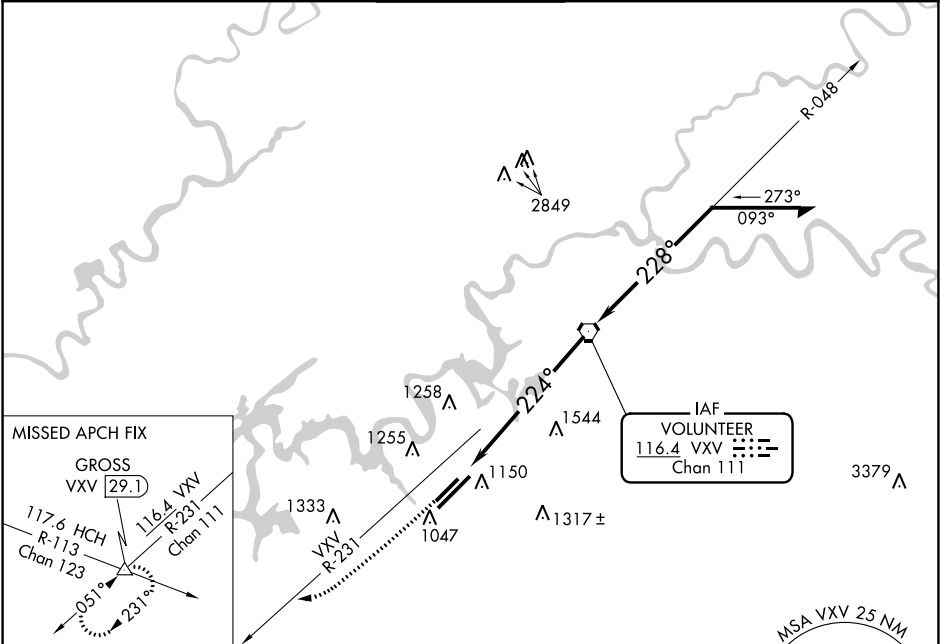
VOR/DME	VXV	Rwy Idg	6005
116.4	APP CRS	TDZE	981
Chan 111	224°	Apt Elev	981

VOR RWY 23R
MC GHEE TYSON (T'YS)

ASR

MISSED APPROACH: Climb to 3000 via VXV R-231 to GROSS INT/29.1 DME and hold.

ATIS 128.35	KNOXVILLE APP CON 123.9 360.8	KNOXVILLE TOWER 121.2 257.8	GND CON 121.9 348.6	CLNC DEL 121.65
----------------	----------------------------------	--------------------------------	------------------------	--------------------



ELEV 981 TDZE 981

224° 6.6 NM from FAF

1144±

TWR 1094

6005 X 150

9000 X 150

1068

HIRL Rwy 5L-23R and 5R-23L
REIL Rwy 5R, 23L, and 23R
TDZ/CL Rwy 5R

FAF to MAP 6.6 NM

Knots	60	90	120	150	180
Min:Sec	6:36	4:24	3:18	2:38	2:12

3000

GROSS

VXV R-231

VXV 4.9

VXV 6.6

2.95°

TCH 55

224°

3100

1.7

4.9 NM

VXV VORTAC

048°

228°

4000

Remain within 10 NM

CATEGORY	A	B	C	D
S-23R	1580/24	599 (600-½)	1580/50 599 (600-1)	1580/60 599 (600-1½)
CIRCLING	1580-1	599 (600-1)	1580-1½ 599 (600-1½)	1620-2 639 (700-2)

SE-1, 31 DEC 2020 to 28 JAN 2021

SE-1, 31 DEC 2020 to 28 JAN 2021