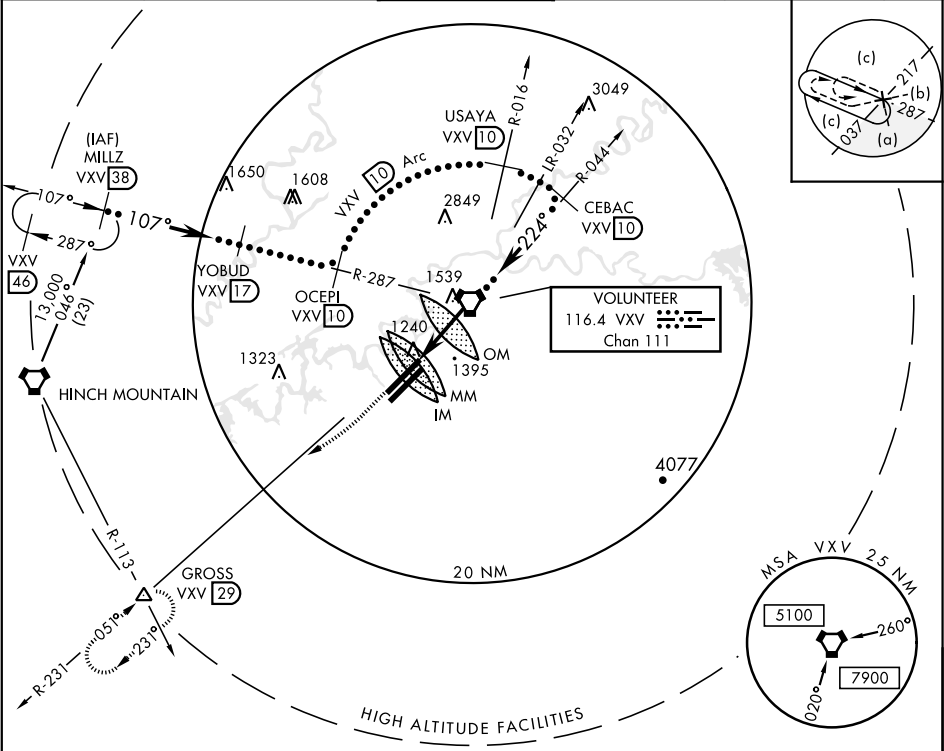


VORTAC VXV 116.4 Chan 111	APCH CRS 224°	Rwy ldg TDZE Arprt Elev 6005 979 981	JAL-218 [USAF]	KNOXVILLE/ McGHEE TYSON (KTYS)
---------------------------------	------------------	---	----------------	--------------------------------

*When ALS inop, increase CAT C vis to 1½ miles, CAT D vis to 1¾ miles, CAT E vis to 2 miles.	MISSED APPROACH: Climb to 3000 on VXV VORTAC R-231 to GROSS Int/29 DME and hold.
---	---

ATIS 128.35	KNOXVILLE APP CON 118.0 360.8	KNOXVILLE TOWER 121.2 257.8	GND CON 121.9 348.6	CLNC DEL 121.65	ASR
----------------	----------------------------------	--------------------------------	------------------------	--------------------	-----



EMERG SAFE ALT 100 NM 8800

MILLZ R-287 (38) YOBUD R-287 (17) OCEPI R-287 (10) USAYA R-016

13,000 6000 6000 6000

10° Arc

VORTAC 224° 3100

1.7 NM 4.9 NM

2.95° TCH 56

3000 VXV R-231

GROSS VXV (29)

CEBAC R-044 (10)

CATEGORY	C	D	E
S-23R *	1580/50 599 (600-1)	1580/60 599 (600-1¼)	1580-1½ 599 (600-1½)
CIRCLING	1580-1½ 599 (600-1½)	1620-2 639 (700-2)	1900-3 919 (1000-3)

ELEV 981 TDZE 979

224° 6.6 NM from FAF

TDZL/CL Rwy 5R  
REIL Rwy 5R-23L  
HIRL Rwy 5R-23L, 5L-23R  
Rwy 23L ldg 8600'

1139 A

TWR 1094

6005 x 150

6000 x 150

6.5% DOWN

6.3% DOWN

1014 A

23L

1025 A

1057 A

1068 A

A5

V

P

5p

5p

5p