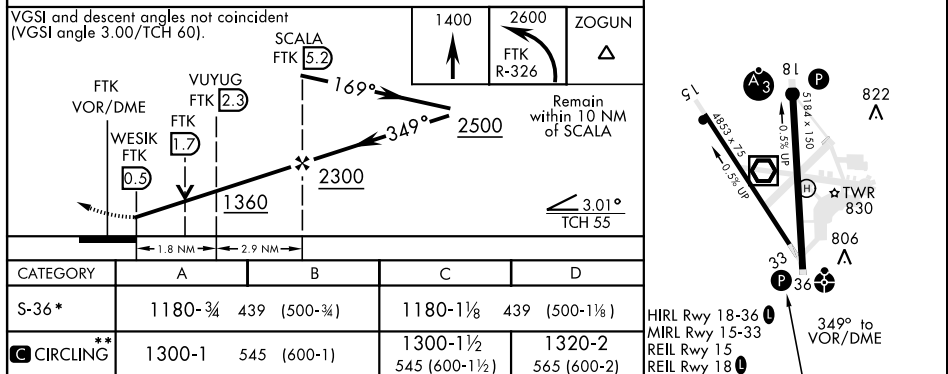
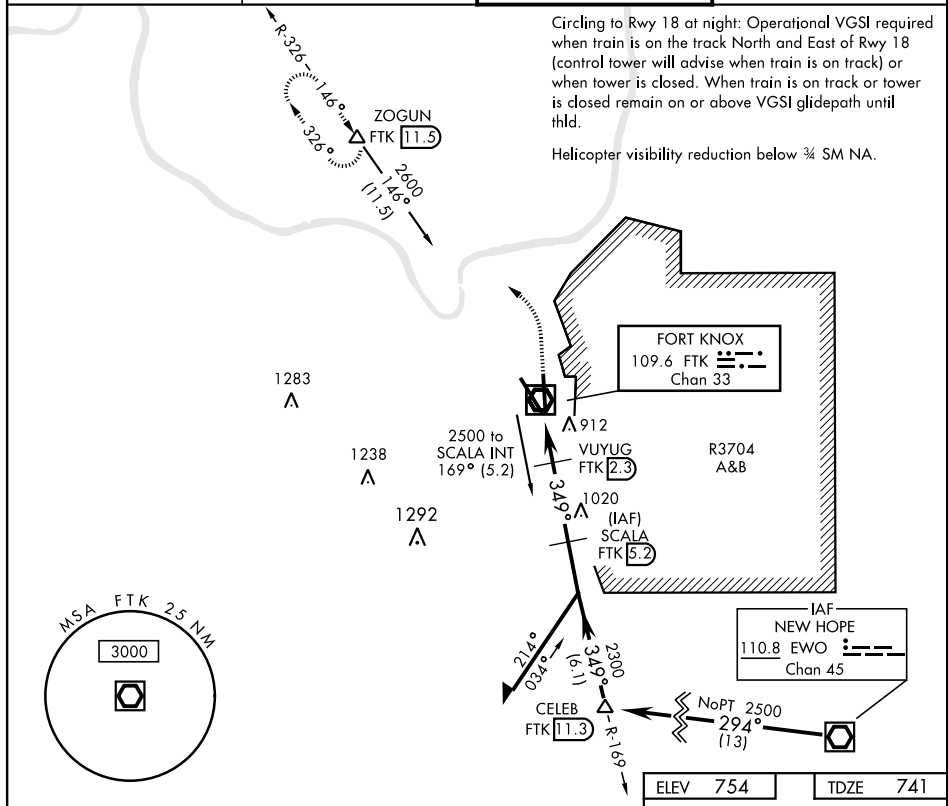


VOR/DME RWY 36

VOR/DME FTK <b>109.6</b> Chan <b>33</b>	APCH CRS <b>349°</b>	Rwy Idg <b>5184</b> TDZE <b>741</b> Arpt Elev <b>754</b>	AL-151 [USA]	GODMAN AAF (KFTK)
<b>V</b> * When ALS inop increase CAT D vis to 1½ mile. ** Circling not authorized E of Rwy 18-36.			<b>ODALS</b> 	<b>MISSED APPROACH:</b> Climb to 1400, then climbing left turn to 2600 on FTK VOR/DME R-326 to ZOGUN INT/FTK 11.5 DME and hold.

<b>ATIS★</b> <b>109.6</b>	<b>LOUISVILLE APP CON</b> <b>132.075 327.0</b>	<b>GODMAN TOWER★</b> <b>133.35 (CTAF) 0</b>	<b>GND CON</b> <b>121.9 239.3</b>
------------------------------	---	--	--------------------------------------



FORT KNOX, KENTUCKY  
Amdt 1B 08OCT20

37°54'N-85°58'W

GODMAN AAF (KFTK)

VOR/DME RWY 36

SE-1, 31 DEC 2020 to 28 JAN 2021

SE-1, 31 DEC 2020 to 28 JAN 2021