

VOR/DME RWY 18

VOR/DME FTK <b>109.6</b> Chan <b>33</b>	APCH CRS <b>186°</b>	Rwy Idg <b>5184</b> TDZE <b>754</b> Arpt Elev <b>754</b>
---	-------------------------	--

AL-151 [USA]

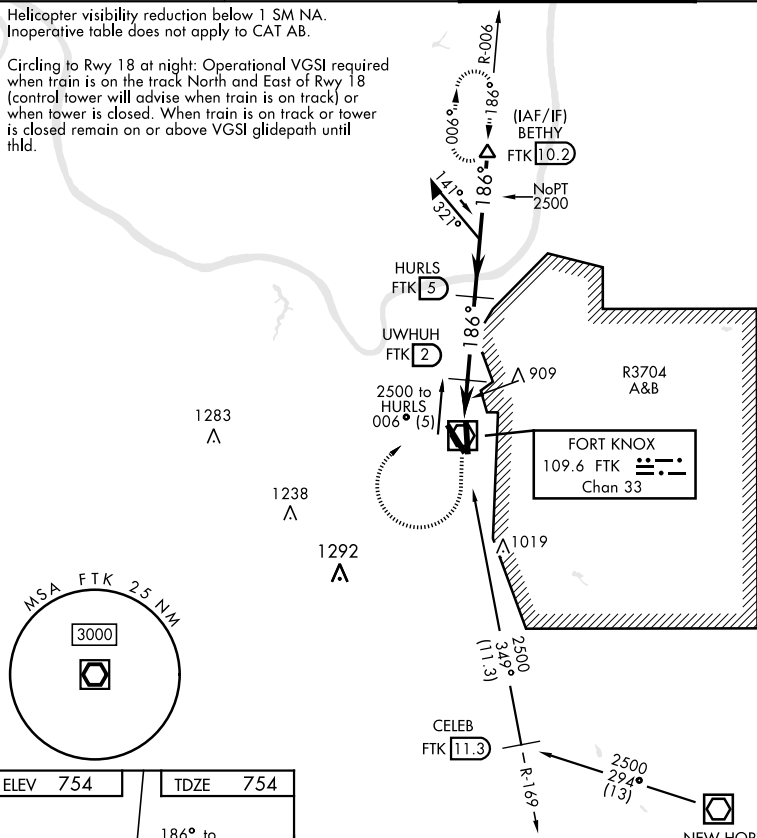
GODMAN AAF (KFTK)

<p>▼ * When ALS inop, increase CAT CD visibility to 1½ mile.          ** Circling NA E of Rwy 18-36.</p>	<p>SSALR</p> 	<p>MISSED APPROACH: Climb to 1300, then climbing right turn to 2600 on heading 036° and FTK VOR/DME R-006 to BETHY INT/FTK 10.2 DME and hold.</p>
--	--	---

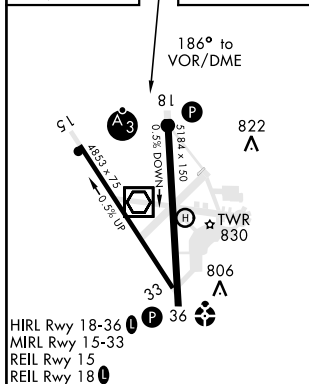
<b>ATIS★</b> <b>109.6</b>	<b>LOUISVILLE APP CON</b> <b>132.075 327.0</b>	<b>GODMAN TOWER★</b> <b>133.35 (CTAF)0</b>	<b>GND CON</b> <b>121.9 239.3</b>
------------------------------	---	---	--------------------------------------

Helicopter visibility reduction below 1 SM NA.  
Inoperative table does not apply to CAT AB.

Circling to Rwy 18 at night: Operational VGSI required when train is on the track North and East of Rwy 18 (control tower will advise when train is on track) or when tower is closed. When train is on track or tower is closed remain on or above VGSI glidepath until thld.



ELEV	754			TDZE	754
------	-----	--	--	------	-----



1300  
↑

2600  
hdg 036

VGSI and descent angles not coincident  
(VGSI angle 3.00/TCH 51)

HURLS  
5

006

Remain within 10 NM

2500

186

2500

3.49°  
TCH 51

UWUHUH  
2

FEMLU  
0.4

VOR/DME

1400

1.6 NM

3 NM

CATEGORY	A	B	C	D
S-18 *	1160-1 405 (500-1)			
CIRCLING **	1300-1 545 (600-1)	1300-1½ 545 (600-1½)	1320-2 565 (600-2)	

FORT KNOX, KENTUCKY

37°54'N-85°58'W

GODMAN AAF (KFTK)

Amdt 1B 08OCT20

VOR/DME RWY 18

SE-1, 31 DEC 2020 to 28 JAN 2021

SE-1, 31 DEC 2020 to 28 JAN 2021