

RNAV (GPS) RWY 18

APCH CRS	Rwy Idg	5184
180°	TDZE	754
	Arpt Elev	754

AL-151 [USA]

GODMAN AAF (KFTK)

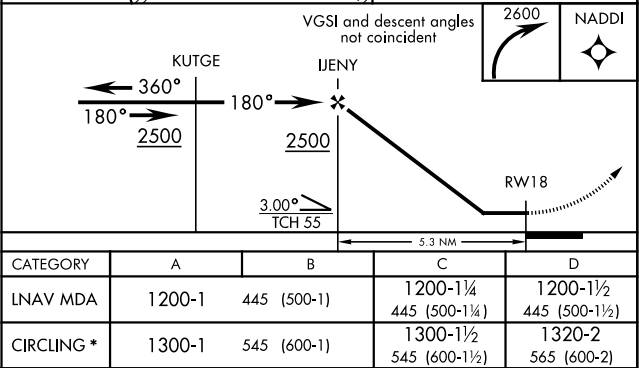
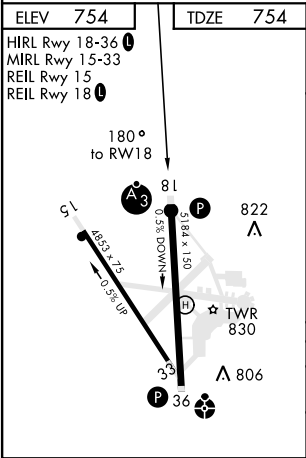
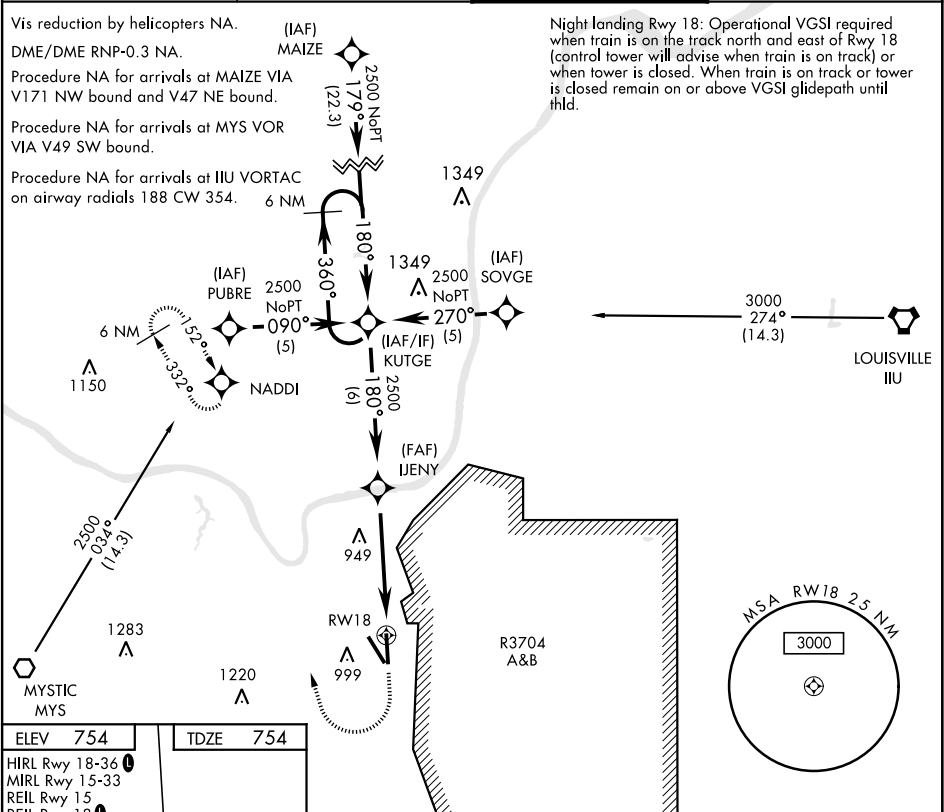
⚠

* Circling not authorized E of Rwy 18-36.

SSALR

MISSED APPROACH: Climbing right to 2600, direct to NADDI and hold.

ATIS★ 109.6	LOUISVILLE APP CON 132.075 327.0	GODMAN TOWER★ 133.35 (CTAF) 0	GND CON 121.9 239.3
----------------	-------------------------------------	----------------------------------	------------------------



RNAV (GPS) RWY 18

SE-1, 31 DEC 2020 to 28 JAN 2021

SE-1, 31 DEC 2020 to 28 JAN 2021