

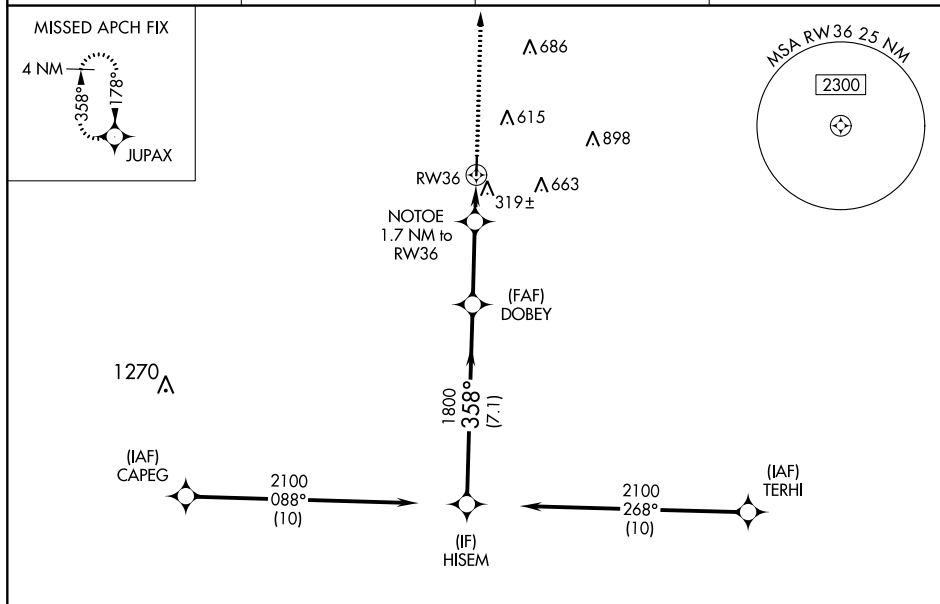
WAAS CH 87122 W36A	APP CRS 358°	Rwy Idg 4001 TDZE 284 Apt Elev 285
--	------------------------	---

RNAV (GPS) RWY 36
HEARNE MUNI (LHB)

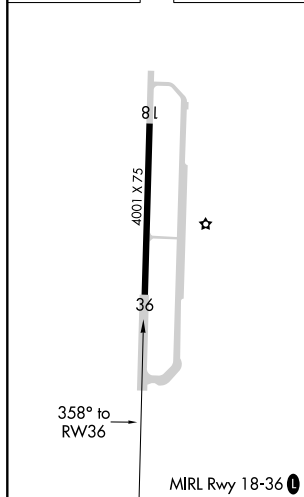
A For uncompensated Baro-VNAV systems, LNAV/VNAV NA below -15°C (5°F) or above 54°C (130°F), DME/DME RNP-0.3 NA. When local altimeter setting not received, use College Station altimeter setting and increase all DA 55 feet and all MDA 60 feet. Increase LPV, LNAV/VNAV all Cats and LNAV Cat C visibility ½ mile. Increase Circling Cat C visibility ¼ mile. Baro-VNAV and VDP NA when using College Station altimeter setting.

MISSED APPROACH: Climb to 2600 direct JUPAX and hold.

AWOS-3 118.675	HOUSTON APP CON 134.3 360.85	CTAF 122.9	123.3 0
--------------------------	--	----------------------	----------------



ELEV 285		TDZE 284
----------	--	----------



RADAR REQUIRED

