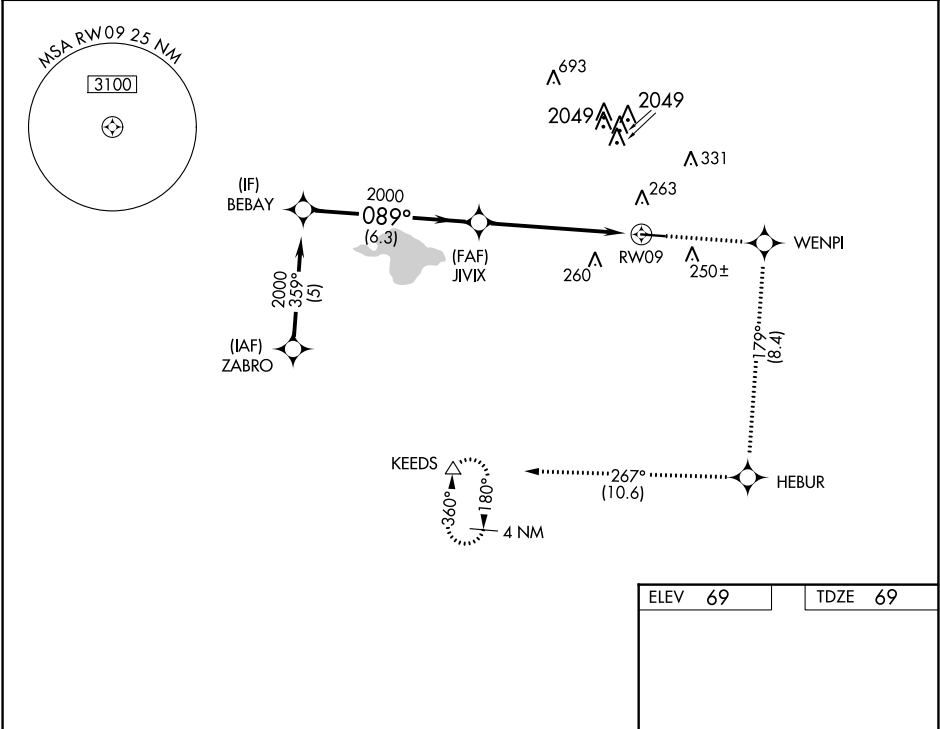


APP CRS	Rwy Idg	5002
089°	TDZE	69
	Apt Elev	69

RNAV (GPS) RWY 9
HOUSTON-SOUTHWEST (AXH)

RNP APCH.		MISSED APPROACH: Climb to 2700 direct WENPI and on track 179° to HEBUR and on track 267° to KEEDS and hold.	
▼ Circling Rwy 27 NA at night. Rwy 9 helicopter visibility reduction below ¾ SM NA.			
AWOS-3 123.625	HOUSTON APP CON 123.8 257.7	CLNC DEL 120.8	UNICOM 123.0 (CTAF) ①



VGSI and descent angles not coincident (VGSI Angle 3.50/TCH 50).		2700	WENPI	tr 179°	HEBUR	tr 267°	KEEDS
		↑	✧		✧		△
		2000	089°	2000	089°	1.2 NM to RWY 9	RWY 9
		6.3 NM	4.6 NM	1.2 NM			
CATEGORY	A	B	C	D			
LNAV MDA	580-1	511 (600-1)	580-1½ 511 (600-1½)	NA			
CIRCLING	620-1	551 (600-1)	620-1½ 551 (600-1½)	NA			

REIL Rwy 9 and 27 0

MIRL Rwy 9-27 0

SC-5, 31 DEC 2020 to 28 JAN 2021

SC-5, 31 DEC 2020 to 28 JAN 2021