

WAAS
CH **90327**
W32A

APP CRS
315°

Rwy Idg
TDZE **665**
Apt Elev **678**

RNAV (GPS) RWY 32

CHEROKEE COUNTY (JSO)

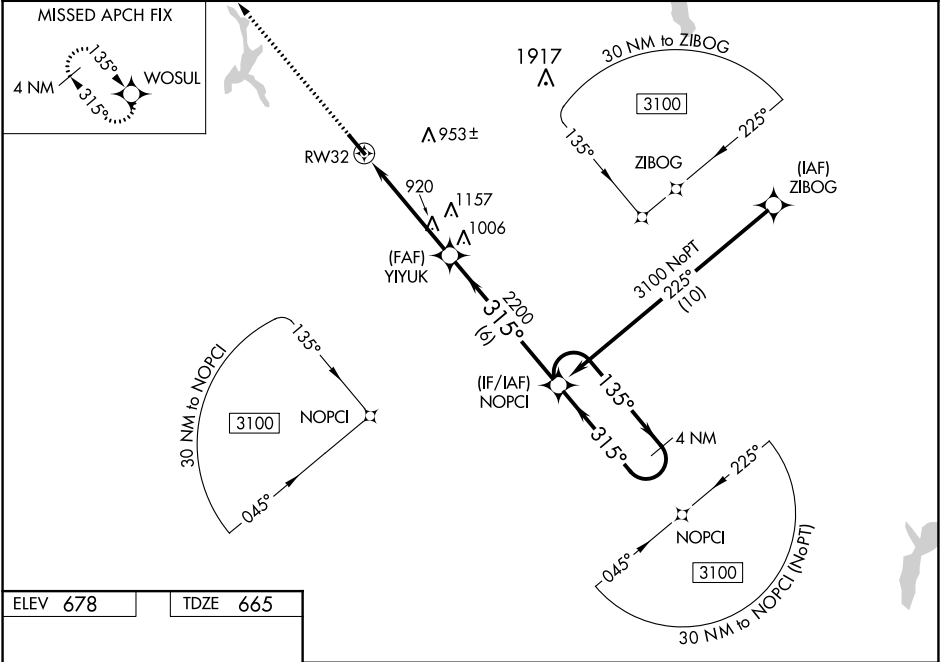
Baro-VNAV NA when using Nacogdoches altimeter setting. For uncompensated Baro-VNAV systems, LNAV/VNAV NA below -16°C (4°F) or above 54°C (130°F). When local altimeter setting not received, use Nacogdoches altimeter setting and increase DA 118 feet, increase all MDA 120 feet and LPV, LNAV/VNAV visibility all Cats ¼ mile, LNAV and Circling Cat C visibility ¾ mile. When VGSI inop, Straight-in/Circling Rwy 32 procedure NA at night. DME/DME RNP-0.3 NA. Visibility reduction by helicopters NA.

MISSED APPROACH: Climb to 3100 direct WOSUL and hold.

AWOS-3
119.075

LONGVIEW APP CON ★
128.75 379.15

UNICOM
122.7 (CTAF) 0



ELEV 678

TDZE 665

3100 WOSUL

YIYUK 2200

NOPCI 4 NM Holding Pattern

3100

GP 3.00° TCH 30

CATEGORY	A	B	C	D
LPV DA	915-1	250 (300-1)		NA
LNAV/VNAV DA	915-1	250 (300-1)		NA
LNAV MDA	1220-1	555 (600-1)	1220-1½ 555 (600-1½)	NA
CIRCLING	1220-1	542 (600-1)	1220-1½ 542 (600-1½)	NA