

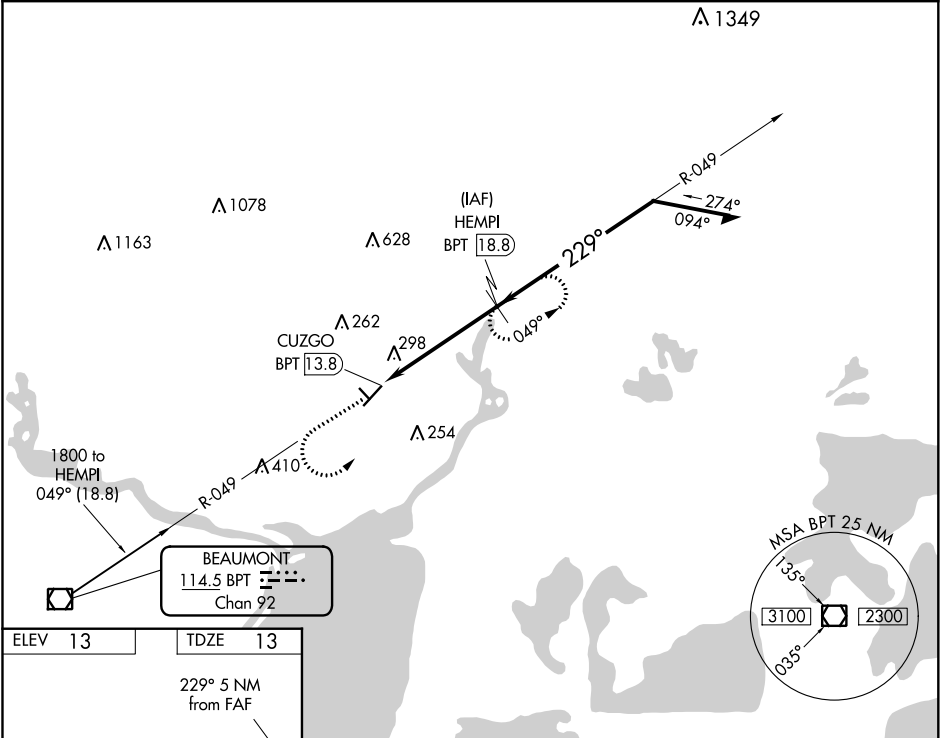
VOR/DME BPT	APP CRS	Rwy Idg	5500
114.5	229°	TDZE	13
Chan 92		Apt Elev	13

VOR/DME RWY 22
ORANGE COUNTY (OR.G)

⚠ Visibility reduction by helicopters NA. Circling NA to Rwy 13/31. VDP NA when using Jack Brooks Rgnl altimeter setting. When local altimeter setting not received, use Jack Brooks Rgnl altimeter setting and increase all MDA 40 feet and increase S-22 and Circling Cat C visibility ¼ mile.

MISSED APPROACH: Climb to 1000 then climbing left turn to 2000 via BPT R-049 to HEMPI/18.8 DME and hold.

AWOS-3 118.975	HOUSTON APP CON 121.3 377.1	UNICOM 122.8 (CTAF) 0
-------------------	--------------------------------	---------------------------------



ELEV 13 TDZE 13

229° 5 NM from FAF

31 500 X 75 3000 X 50

1000 2000 HEMPI BPT 18.8

BPT R-049

HEMPI BPT 18.8

CUZGO BPT 13.8 BPT 15.6

3.08° TCH 45

6000 1800 1700

049° 229°

Remain within 10 NM

1.8 NM 3.3 NM

VGSI and descent angles not coincident (VGSI Angle 3.00/TCH 21).

CATEGORY	A	B	C	D
S-22	600-1 587 (600-1)		600-1½ 587 (600-1½)	NA
CIRCLING	660-1 647 (700-1)		660-1¾ 647 (700-1¾)	NA

MIRL Rwy 4-22 **0**

REIL Rwy 4 and 22 **0**

SC-5, 31 DEC 2020 to 28 JAN 2021

SC-5, 31 DEC 2020 to 28 JAN 2021