

NDB ARM	APP CRS	Rwy Idg	5004
245	335°	TDZE	99
		Apt Elev	100

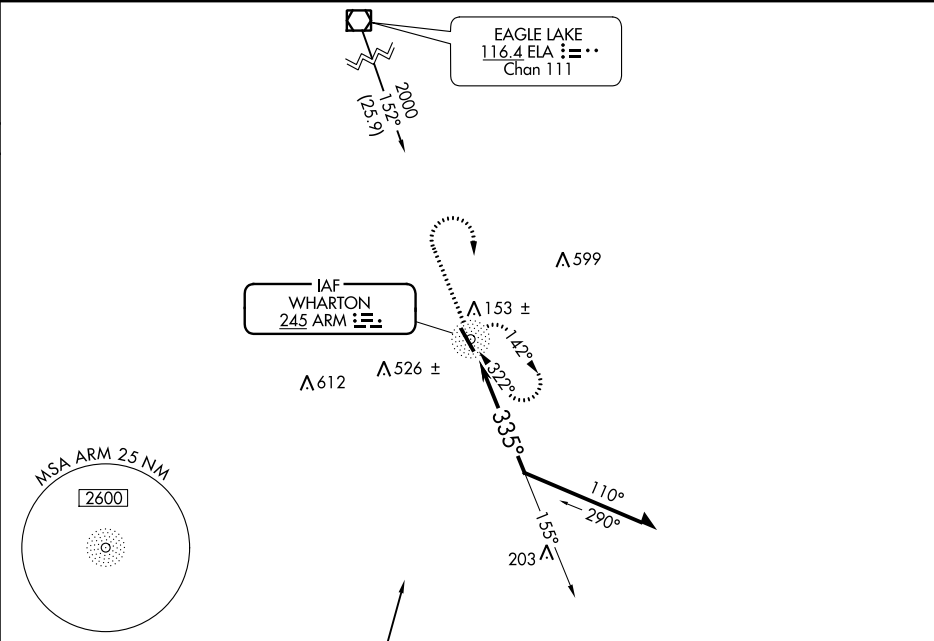
NDB RWY 32

WHARTON RGNL (ARM)

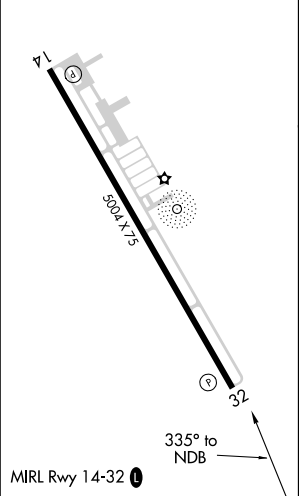
▼

MISSED APPROACH: Climb to 2000 then right turn direct ARM NDB and hold.

AWOS-3 118.475	HOUSTON CENTER 128.6 360.8	UNICOM 122.7 (CTAF) 0
-------------------	-------------------------------	--------------------------



ELEV 100	TDZE 99
----------	---------



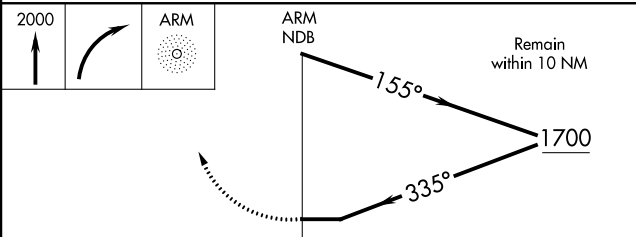
2000

ARM

ARM NDB

Procedure NA for arrivals on PSX VORTAC airway radials 009 CW 060.

Remain within 10 NM



CATEGORY	A	B	C	D
S-32	560-1	461 (500-1)	560-1 3/8 461 (500-1 3/8)	NA
CIRCLING	560-1	460 (500-1)	560-1 1/2 460 (500-1 1/2)	NA

SC-5, 31 DEC 2020 to 28 JAN 2021

SC-5, 31 DEC 2020 to 28 JAN 2021