

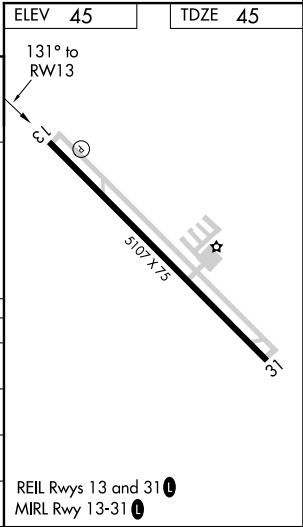
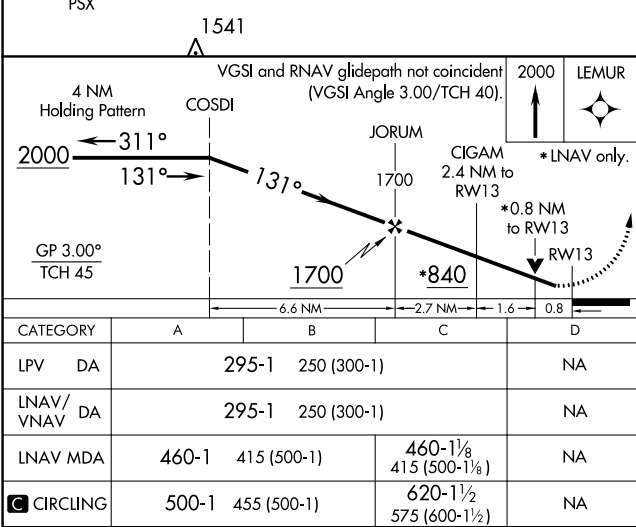
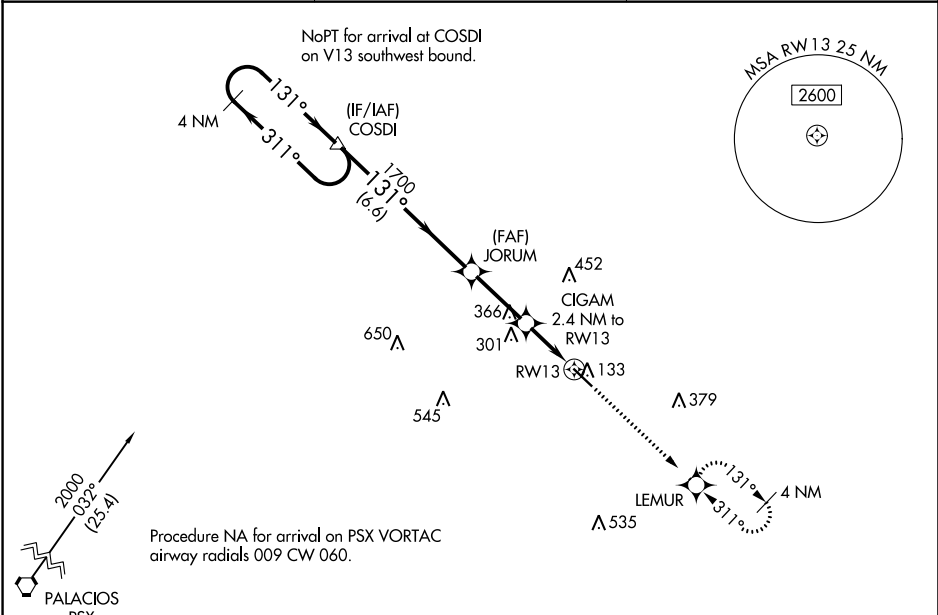
WAAS CH <b>40127</b> <b>W13A</b>	APP CRS <b>131°</b>	Rwy Idg <b>5107</b> TDZE <b>45</b> Apt Elev <b>45</b>
--	------------------------	---

RNAV (GPS) RWY 13  
BAY CITY RGNL (BYY)

**⚠** For uncompensated Baro-VNAV systems, LNAV/VNAV NA below -15°C (5°F) or above 54°C (130°F). Rwy 13, 31 helicopter visibility reduction below 1 SM NA. RADAR required. DME/DME RNP-0.3 NA. When local altimeter setting not received, use Palacios altimeter setting and increase all DA 63 feet and all MDA 80 feet; increase LNAV visibility Cat C ¼ mile. VDP and Baro-VNAV N/A when using Palacios altimeter setting.

**MISSED APPROACH:**  
Climb to 2000 direct LEMUR and hold.

AWOS-3 <b>118.075</b>	HOUSTON CENTER <b>128.6 360.8</b>	UNICOM <b>122.8 (CTAF) 0</b>
--------------------------	--------------------------------------	---------------------------------



SC-5, 31 DEC 2020 to 28 JAN 2021

SC-5, 31 DEC 2020 to 28 JAN 2021